

Keble College MCR
Freshers Handbook 2016-17

Keble College
Parks Road
Oxford
OX1 3PG

Dear Fresher,

I am really pleased to be welcoming you to Keble College MCR next term, and congratulations on your acceptance.

The MCR, or Middle Common Room, represents two things. Firstly, it is a physical place within college, with a reading room, kitchen, games room and cellar, which I hope you will consider your home within college. The MCR is used for regularly-organised social events and casual gatherings as well.

Secondly, and more importantly, the MCR is the name given to the postgraduate student body at Keble, of which you are all now members. The JCR (Junior Common Room) consists of the undergraduate students in Keble, and the SCR (Senior Common Room) consists of academic staff - research fellows, professors and others associated with college in this capacity.

With around 250 graduate students, we are one of the largest MCRs within Oxford, and are well known to be one of the most social and inclusive. I hope you will be able to experience the large variety of sporting, social, and welfare activities we offer when you arrive here in the autumn. We have curated a schedule of events to help you settle in and get to know other members of the MCR, for both freshers like yourself as well as veterans of the common room. Throughout Michaelmas (first term) we will be hosting diverse social, cultural and sporting events. Keep an eye on the calendar at: <http://mcr.keble.ox.ac.uk/calendar.html>. You will receive more details of this when you arrive in Keble.

This freshers' handbook is also available at: <http://mcr.keble.ox.ac.uk/freshers>. It (hopefully!) provides everything you need to know about Keble MCR, but also includes information on the College itself, and about moving to Oxford. We've included information about who are MCR Committee Members are and what they do. If you've got anything you need to discuss or ask about, you should be able to contact the most relevant committee member, or your mentor, who you will be paired up with when you receive your Keble email address, if you haven't heard from them already.

Before I came to Oxford, I didn't anticipate how important the MCR was going to be in my life, and how it has really made my experience of Oxford so much better. I am very grateful to have had the chance to interact with people outside of my own department, and it's been amazing to be a part of a student community in a town that feels like your own.

Looking forward to meeting you all,

Libby Rose-Innes
MCR President

A quick guide to the MCR

Executive Committee

Senior committee members who run the MCR meetings (twice termly) and the MCR budget. We also deal with the Governing Body of college, domestic issues and send out weekly emails. We sound boring but I promise deep down we are really fun.

**DfYgJXYbhË @VVmiF cgY!-bbYg`
dfYgJXYbhË a W" _YV`Y"cl 'UWï _`**

Previously the MCR female welfare officer, Libby is starting her third year of Grad Medicine at Keble. Although she only kicked a football for the first time in September, she certainly will be in contact to recruit you for the women's football team, where she enjoys bossing people around from the goal.

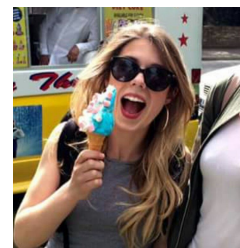


**J JW`DfYgJXYbhË GWË HïF UHJ
gYWYHJmË a W" _YV`Y"cl 'UWï _`**

Scott is going into his eighth year as a Keblite. When he is not modelling the cell cycle, he can be found feeding ducks in the park and searching for the Keble duck during spring. He enjoys playing for the MCR football team.

**HfYUgi fYf`Ë`NUa a mi: Ujf\ i fgh`
.....HfYUgi fYf4 a W" _YV`Y"cl 'UWï _`**

Zammy is going into her third year of doing a PhD in a mish mash of genetics and statistics. Having served on the committee for three years in a row, she has gained lots of vital experience in how to make lethal cocktails and throwing cheese themed parties"



**GYWYHJmË!`7`UFY`<i fgh`
gYWYHJmË a W" _YV`Y"cl 'UWï _`**

Clare has just finished her maths and computer science masters at Keble and loved it so much she has decided to stay and do a PGCE this year. Special interest: making difficult conundrums and rewarding correct answers with chocolate.

Welfare

The major role of the welfare officers is to be a confidential point of contact within college. If you need someone to talk to, they can discuss things or help direct you to other individuals or services that can help. The welfare team run a brunch in the TV room of the MCR every Saturday at 11am and also provide Tea and Cakes on Sundays at 4pm (both free!). Tea, coffee, biscuits and fruit are left in the MCR over the week and everyone can help themselves. Let them know if the MCR is running out of something!

Welfare also provide free condoms, pregnancy tests, panic alarms, lube and dental dams discretely and confidentially. Please email either of the team below for more information.



**: Ya UYK YZFYCZWF! < UbbUBck JW_U
ZYa UY!k YZFY4 a W" _YV"Y"cl "UW! _'**

Before working on her DPhil in Biomedical Imaging, Hanna graduated with an Engineering degree. Her first degree took longer than expected due to her unfought urge to travel. At Keble MCR Hanna is responsible for welfare and playing solid football.'

**AUYK YZFYCZWF! '5 `YI `9a Yfm
a UY!k YZFY4 a W" _YV"Y"cl "UW! _'**

Alex, in his 5th year at Keble, is the last of 5 Medical Students reading the 6 year course from his cohort. He presumes their leaving had nothing to do with his cracking sense of humour. His interests include cycling up Headington Hill every day, and organising the weekly welfare brunch.



**9ei U]hYg' CZWF' E'; c[i `Ub'f] c[gL? Ufi bUb]h m
Yei U]m# a W" _YV"Y"cl "UW! _'**

Gogs has been knocking around Keble since 2011, and is about to start his second year of a DPhil in physical chemistry. He's also the Keble darts captain and so can often be found having a throw in the bar.

Social

The two main events every term are the MCR BOP (fancy dress party) and the black tie dinner. However, there is never a week where there is nothing going on (and as the new social secretaries promise me, there will be multiple events per week). From board games, to Öæ ^Ä Á V@] } ^• screenings, BBQs, and subsidized theatre trips, the social secs will be working closely with the arts and culture secretary. We will provide a range of both alcohol-free and alcohol-friendly events throughout the year, and the best way to stay in touch with what is going on is to subscribe to the MCR calendar (<http://mcr.keble.ox.ac.uk/calendar.html>), and check the Facebook page (https://www.facebook.com/groups/KebleMCR/?ref=br_tf). Emails will also be sent out before events.

Last year, we also restarted an old tradition of an exchange with Selwyn College, our sister college in Cambridge. This consisted of a 'home' and 'away' leg, both with formal dinners, drinks, tours and male and female football matches. We also do a couple of smaller exchange dinners and drinks between different Oxford colleges throughout term.

Although not run by the MCR, the Keble College Ball, in May of each year, is run by a student committee and attended by almost everyone in college. MCR members are always in the committee so look out for recruitment emails when they come along.

If you fancy running an event, or have an idea for one, get in contact with the social team.



GcWU'gYWYHUfJYg'Ë'G' YUC& U[Ub'UbX'DU' `A UYmi Ybm4 a W" _YV'Y'cl 'UWï _'

Having both been involved in running the Keble Ball last year, these boys know how to throw a good party. They are also super nice and both do Atomic and Laser physics. Special interest: getting sponsored to do pub crawls.

6`UW`HjY'8]bbYf`CZQWf`Ë`? UHY'8]W]bgcb` V`UW`!hY!X]bbYf4 a W" _YV'Y'cl 'UWï _'

Kate is key to the running of the MCR. She is really good at making themed table labels for dinners. Special interest: Origami and co-founder of women's football.



5 fHg'UbX'7 i `hi fY'Ë'C`a c`7 Unc`Uf] UfHg4 a W" _YV'Y'cl 'UWï _'

Our resident cultured classy Italian, with a penchant for outdoor theatre and museums. Special interest: Deliciously curated cocktails.

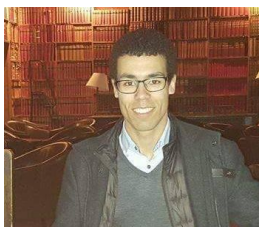
5`bi H!UbX`Acbn]i f`FU a Ub` YI W Ub[Y!X]bbYf4 a W" _YV'Y'cl 'UWï _'

Studying Modern Languages and Neuroscience, this team have everything covered.



GYk nb`9I W Ub[Y`CZQWf`g`Ë`7\ f]g`

9I W Ub[Y'8]bbYf`cZQWf`!`E i]bWñj Ub`XYb`6 Yf[` YI W Ub[Y!X]bbYf4 a W" _YV'Y'cl 'UWï _'



When he is not planning delicious dinners at other Oxford colleges, Quincy will be found strutting his stuff on the dance floor, hopefully he'll give the MCR a salsa lesson!

Sports

Some of Keble's finest achievements come from its great sports teams. At Oxford, you can play sport at University ('Blues') or college level. While the Blues teams tends to be a bit more serious, taking part in college sport is a great way to meet new people, stay active, and fuel

your competitive edge - all teams also have a great social scene!

In Keble there are various MCR specific teams including men's and women's Football and Cricket, but when combined with the JCR you can get involved with anything from Rowing and Hockey to Dancesport and Croquet.

That doesn't mean there's not other new sports on offer if you fancy them. Keble MCR members have joined university teams such as Quidditch, Ultimate Frisbee and Australian Rules Football so there should definitely be something on offer for you!

If you want to know more of what is available in Keble and Oxford have a look at the Sports page on the MCR website or get in touch.



**GdcfHg`E`8 Ub`6 UfbYg`
gdcfHg4 a W`_YV`Y`cI `UWfi `**

Dan really likes sports and when he isn't playing sports he is watching sports or doing his DPhil with robots.

Facilities

The main room of the MCR is the reading room and has loads of comfy sofas and an open fireplace which is often lit in the winter. It is (in my opinion) one of the nicest places to work/relax in Oxford! Other MCR facilities include a TV room with a Sky TV, Blu-ray player and Wii, a kitchen with a refrigerator, microwave and dishwasher, which everyone is free to use. Disabled access to the MCR is via Hayward Quad. The games room contains a free pool table, table football, a computer and the Cellar. Printing from this computer will incur a small charge on your termly battels account. The Cellar is stocked regularly with beer, soft drinks, chocolate, crisps and other snack foods, and works on an honesty system; sign out what you take and you'll be charged at the end of the term via your battels.

The MCR has a number of lockers which you can use for a small deposit. Please contact the Treasurer for more details.



**7 Y`Uf`GHk UfXgE8 Uj JX`DYVYfXmiUbX`GHYZub`GUZHgW`
Wf`Uf4 a W`_YV`Y`cI `UWfi `**

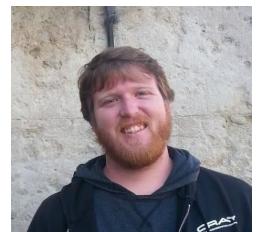
Advocates of delightful company and of responsible drinking, these two will make sure that the cellar is always stocked with tasty snacks and tasty drinks throughout the year.

Special interest: Croquet. They are really

good. Well Stefan is really good...

**H`!`Hja`NU`JUb`
Jh4 a W`_YV`Y`cI `UWfi `**

Hailing from Hawaii, Tim is great at doing stuff with computers no one understands. And no, he is not here to fix your laptop. Special interest: actually likes drinking cold, over-brewed tea.



9bj Jfcba YbhE`>Ybbm< Yba Ub`

Jenny has just finished her PGCE in Geography at Keble. Thankfully she has a job teaching just down the road next year at Magdalen College School so can be an “associate member” of the MCR and stay involved.

Associate members

Some individuals who are not current graduate students at Keble but who are connected with college are able to become associate members of the MCR for a small fee. They are able to enjoy many aspects of the MCR; they are added to the mailing list, can play in the sports teams and are able to come to all events.

The main criteria for being able to become an associate member are: being the partner of a full MCR member, a previous MCR member etc. Please see the application form on the MCR website or contact the Vice President for more details.

This is a particularly good opportunity if you have a long-term partner or spouse coming to Oxford with you; sometimes it can be more difficult for them to integrate into a social scene. The associate membership gives them an excellent opportunity to quickly integrate into a common social scene.

Before you arrive

Coming to Oxford

K YUH Yf'

In the summer months Oxford can be hot and sunny and in the winter it can be cold and snowy (snowing heavily every few years), and it will also rain at any time of the year. So while you are also packing thick jumpers for the coming term you may exchange these for cotton shirts and swimming costumes come Trinity term. For the first term warm layers, a good waterproof jacket and good shoes are essential.

8 fYgg

Dress around the University is informal. However, there are many formal occasions such as guest dinners, subject and club dinners, and balls where dress is black tie (tuxedo / formal cocktail dress). Dinner jackets for men can usually be hired, though second hand/cheaper ones can be bought in town. It would be useful for women to bring a couple of cocktail dresses and a full length dress if you have them already, and for men to bring a smart jacket and tie.

Specific attire is also required for formal university occasions such as matriculation and examinations (see 'sub fusc' in the glossary).

6 JwWYg'

The bicycle is synonymous with Oxford. Cycling is a very popular means of transport in Oxford as it is a fast and affordable way to get around town. While it is more affordable to bring your own bicycle from home this isn't always an option and there are a number of bike shops around the city. Unfortunately, where there are bicycles there is bicycle theft and it is advised that you spend a little money on a D-lock and always lock your bike to a solid object such as a rack.

There is a large second hand bike turnover in Oxford. The facebook page, 'Buy and Sell Cycling Stuff in Oxfordshire' is a good place to look for a bike if you want to buy one second hand.

<https://www.facebook.com/groups/578636665511973/>

There are bicycle racks all around the perimeter of college and a new rack is being built near ARCO. The rack in college is particularly secure as it is only accessible to members of Keble, and the area is monitored by CCTV. If you wish to use these facilities, please register your bike with the Porters' Lodge when you arrive. A helmet is also strongly recommended, and it is a legal requirement to use bike lights (white at the front and red at the back) after dark. You can be stopped and fined for not using them. Removable bike lights (to prevent theft), locks and other things can be bought at freshers fair.

7 Ufg`

Parts of the city centre are only accessible to pedestrians and public transport, and parking space is limited. There are parking spaces close to college on both Keble Road and Museum Road. There are also spaces at Norham Gardens which is a five-minute walk away. To use these parking spaces you need to purchase a parking ticket, which tend to be quite expensive. If you are living in private accommodation you may be entitled to a residents' parking permit, and you should speak to your landlord. Students are not able to park cars within college grounds.

6 i gYg`UbX`K U_]b[`

For those who wish to avoid having a car or bicycle in Oxford, it is quite feasible to walk to most locations. Most destinations are within 5 to 20 minutes walking from Keble, although distant locations such as the JR Hospital, Churchill Hospital, and Headington are easily accessible by the comprehensive city bus system or by bicycle.

DUggdcfhid\ ctc[fUd\ g`

You will probably find it useful to bring copies of recent passport-sized photographs. Membership and discount cards often require a photo of this kind. An instant-photo machine is also available in Boots the chemist in Cornmarket street.

9`Ywf]V]mi

British electricity is 240/220 volts and 50 Hz and runs through the large three-pin outlets.

J]gUgž7 i ghca gžUbX`-a a][fU]cb`

If coming from abroad, ensure that you have the appropriate entry documents on hand before leaving home. Depending on your country of origin, this may include your letter of admission to the college or your department in addition to your Tier 4 visa. Before travelling to the UK, check the UK Border Agency website and/or your local UK Embassy for more information. Remember (at least for your UKBA Landing Card) that your address in college is:

Keble College, Parks Road, Oxford, Oxfordshire, OX1 3PG

It is probably not necessary, but perhaps advisable when clearing border control to carry all the documentation used when applying for the student visa, particularly CAS documentation.

Getting to Oxford

Oxford is well connected by rail services to the whole of the UK, and is one hour by train from Paddington Station, London. Booking in advance with nationalrail.co.uk is the cheapest option. National Express coach service (<http://www.nationalexpress.com/>) offers a regular services from all of the major airports; Heathrow, Gatwick, Luton and Stanstead. It is probably easiest to get the train from Birmingham if you are flying in there. The route from Heathrow and Gatwick to Oxford is called The Airline (www.theairline.info). Travel from Heathrow costs £23 for a single

(one way ticket) with coaches departing every half-hour and Gatwick costs £28 (single) with departures every hour. Different types of return ticket can be bought, depending on when you will be returning to the airport.

Gloucester Green Bus Station is the closest stop for those heading to Keble. Anyone arriving on a bus/coach from the North (i.e. Banbury/Woodstock) get off the 'Keble Road' stop or the stop opposite the old Radcliffe Infirmary. Keble is about a safe 15 minute walk from Gloucester Green bus station or 20-25 mins from the train station. A taxi from the bus station or train station to Keble should cost around £5. (001 Taxi's phone number: +447865 240 000).

If you arrive by car, a limited number of short-stay parking places are available outside the college on Keble Road for you to unload your car.

F Uj`UbX'6 i g'DUggYg'

Rail and bus passes can be useful if you plan to travel in the UK while at Oxford. A Young Person's Railcard is available at the rail station for those 25 and under or full-time mature students for about £30 and will entitle you to one third reduction with off-peak rates (<http://www.youngpersonsrailcard.co.uk/>). You can buy an one-year National Express Coachcard for £10, which gives you discounts of up to 30% on National Express fares (<http://www.nationalexpress.com>) throughout Great Britain. Two passport-sized photos are typically required. Bus passes are also available from the Oxford Tube, Oxford Bus Company, Stagecoach and Oxford Citylink companies.

Arrival at Keble

Upon arriving at Keble, you should go to the porters' lodge (open 24 hours a day) directly inside the college's entrance off Parks road. The porter can direct you to your accommodation, the MCR, the Bursary, the College Office etc. You will have several things to do and the porters will provide you with the information you need. In general, the porters know everyone around college and everything about it, and are really good people to ask questions to.

On arrival, report to the porters' lodge and:

1. If you are staying in college accommodation, collect your room keys and arrange to sign your lease contract.
2. Check your pigeon-hole for mail (pidge).
3. Ask the porter for directions to the College Office (open 8am-6pm Monday to Friday, if you are arriving outside of these times email president@mcr.keble.ox.ac.uk) where you can pick up your University Card (Bod Card), Freshers' Welcome Pack, and sign the College Book.
4. Check on arrangements for meals (sign up for evening meals online at <http://meals.keble.ox.ac.uk>).
5. Ask the porters to show you where the MCR is. You can access the MCR using your Bod card, and it is open 24 hours a day every day. We will email you the freshers schedule and put a copy of the timetable in your pidge before the beginning of term, so you know when official MCR events will be running. If you would like to meet someone in the MCR when you arrive, email president@mcr.keble.ox.ac.uk and we will arrange this for you.
6. Register your bike with Keble if you have one.

Oxford Terms

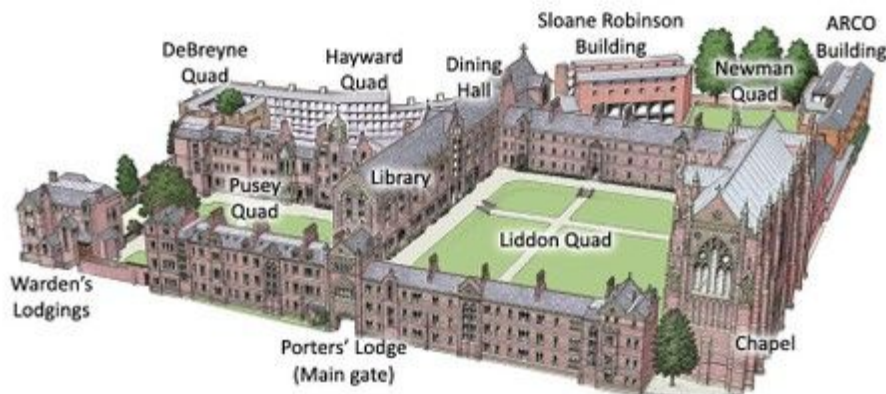
Oxford terms are eight weeks and referred to by name: Michaelmas term (MT) runs from October to December, Hilary term (HT) from January to March, and Trinity terms (TT) from April to June. During term, weeks are referred to by number (e.g. 1st Week, 2nd Week, etc.), and run from Sunday to Saturday. Both the college and your department will be running orientation activities normally throughout 0th Week (Freshers week) to help you familiarize yourself with Oxford and to meet new people. You should contact your department or faculty to find out exactly when your course begins, in case you need to arrive earlier than 0th week.

Most of the MCR stay in Oxford the entire year, even though most undergraduates leave in the vacation. We continue to run events throughout the vacations.

Michaelmas 2016	Sunday, 9 October	Saturday, 3 December
-----------------	-------------------	----------------------

Hilary 2017	Sunday, 15 January	Saturday, 11 March
Trinity 2017	Sunday, 23 April	Saturday, 17 June

College



Facilities

The Porters' Lodge

The college porters are some of the most helpful people in college. The Porters' Lodge, located at the entrance to the College, is mainly responsible for security and post but can provide you with most of the practical information you need. Don't be afraid to ask questions. The Lodge is open 24 hours a day and the porters are there to help and support you. Disabled access is via the entrance to staircase 1 in Liddon Quad. The front college gate is locked after dusk but members can enter using their university card (aka Bod card).

In the Lodge you can also:

- Check your personal pigeonhole (pidge) for post pick up your parcels and deliveries.
- Use the university and external postal systems.
- Pick up keys for the squash court, gym, music room, etc.
- Sign up for the MCR punt (only in summer).
- Enquire about lost property.
- Call in case of emergency, phone number +44(0)1865 272727

Keble Library

Accessed using your BOD card, Keble library is open 24 hours a day throughout the year, something you will probably really appreciate when university libraries close early in the holidays. The books within the library is largely geared towards undergraduate courses and its

holdings are less relevant for most graduate courses (although many graduates admit to being pleasantly surprised by its resources).

Graduates can request the library to get a book in stock for them, if it is sufficiently relevant to their studies. Similarly, (and perhaps more effectively), you can ask your college advisor to place a request on your behalf. The library has a printer and two computers (printer use only) in the basement. Copying and printing costs will be charged to your college account (known as Battels). You can also borrow DVDs, travel guides and novels from the library.

College Doctor

When you come to Keble, you must register with an Oxford doctor. Keble prefers that you register with the Jericho Health Centre on Walton Street (less than half a mile away). Information about how to do this will be provided by the college before you arrive. If you need to see a doctor, you can always ring and make an appointment (01865 429993). There is also a College nurse (Lynn Cross, lynn.cross@keble.ox.ac.uk), available for a couple of hours every weekday during term time (weeks 1 to 8) for minor treatments. The nurse will be holding her surgeries in Somerville College, a 2 minute walk from Keble.

UK residents, and some overseas students are entitled to free health care under the National Health Service, so be sure to find out if you are covered. You can also ask the nurse for recommendations of dentists and other specialists.

Computer Room

There is a computer room (including printers) beneath the Warden's Lodgings, which you access with your Bod card. It does not have disabled access. The college IT offices are also located here and they might be a good first contact to help you with any computer problems for free. You get a university email account once you have registered. This is done through the Oxford University Computer Services (<https://register.oucs.ox.ac.uk/login>) and you will be sent all the necessary instructions before your arrival. Since email is the default means of communication within the university, it is important to activate your account as quickly as possible.

Keble Bar

Keble bar is a good social space in the college which provides an alternative to the MCR. With £2 pints and freshly toasted toasties, this is a great place for a drink and a bite to eat at the end of the day. The bar is also complete with various games equipment including a table football and a darts board (on which note Keble College Darts Club always has a good MCR contingent and will be recruiting new members- email gogulan.karunanithy@keble.ox.ac.uk if you're interested in joining).

Keble Café

During term times Keble Café (in the Douglas Price Room of the Sloane Robinson Building) is open from 11am to 6pm for refreshments. Coffee, soft drinks, sandwiches and a selection of cakes and pastries are available and payment is by cash at the till.

Keble Gym

Keble has its own gym (located beneath the JCR). Its facilities include 7 cardio-vascular machines (2 ergs, 3 bikes, treadmill and cross-trainer), a good range of weights equipment, incline bench etc., an exercise area with exercise balls, punch-bag etc. The gym is open from 7am until midnight every day. Gym membership costs £30 per term or £65 per academic year. Membership forms can be obtained on the Keble website or from the porters lodge.

Squash Courts

Keble College members have use of a squash court accessed via St. Cross Road, backing onto the University Club Sports Ground, off Mansfield Road. One court is available, complete with showers, changing room and observation gallery. If you would like to become a Keble Squash member a Membership Application Form, along with Terms and Conditions, can be obtained on the Keble website or from the porters lodge. The membership fee is £15 for the academic year, irrespective of the time of year you choose to join and is payable by a charge to battels.

The O'Reilly Theatre

The O'Reilly Theatre is one of Oxford's newest student theatres, having opened in October 2002. Located in the Sloane Robinson building, it is a 181 capacity theatre whose versatile staging and technical possibilities make it a popular venue for some of the best student drama around. Every term five plays (four in Hilary) are selected to perform, and in the past productions have ranged from musicals to gritty reality dramas.

Chapel

The Keble chapel is one of the most impressive buildings in college and is open daily to everyone. The side chapel boasts the original 'Light of the World' painting by Holman Hunt, a reproduction of which is in St. Paul's Cathedral. The Chapel holds daily services in accordance with the Church of England, including a Eucharist on Sunday evenings during term time at 5.30pm and Choral Evensong on Wednesdays at 6.00pm. The College Chaplain is Revd Nevsky Everett (nevsky.everett@keble.ox.ac.uk). It is worth going to at least one service, if only to hear the excellent choir and acoustics. At the end of Michaelmas, there is a candlelit Advent carol service for Christmas which is always popular.

Meals

The College serves three meals a day, five days a week, and two meals (brunch and dinner) on Saturdays and Sundays. The provision of meals by College has changed for this academic year, with the following meal times and prices:

-Breakfast (Monday-Friday) 8.15-9.45 (self-service)
-Lunch (Monday-Friday) 12.30-13.45 (self-service, around £3.00 for the main meal)
- .. Formal Dinner (Sunday, Tuesday, Thursday of odd weeks, Friday of even weeks.)
19.00, three course (£6.95)
- .. Informal Dinner (Other four nights per week, and when a Black Tie Dinner replaces Formal Dinner) 18.00 - 19:30 (self service)
-Brunch (Saturday-Sunday) 10:30-12 (self-service)

The prices are subject to change year-to-year, but this is a rough guide you might expect to pay for meals in College. The exact figures for 2016-2017 will be added here as soon as they are available. Note you need to add a £2 per person surcharge for guests, and for lunch a 50% guest surcharge is added.

At the beginning of term you will receive your Bod card, on which you can charge meals in Hall and snacks in Keble Café. These charges will appear on your Battels bill. The quality of the food, considered average by Oxford standards, varies but is very reasonable. Eating in the College costs a lot less than eating out but somewhat more than cooking for yourself.

Breakfast, Lunch, Brunch

There is no need to sign up for those meals during term time, but you have to sign up during vacations for Lunch and Brunch. Vacation meal times are also slightly different than term time, and will be advertised by Hall staff via email.

Dinner

Dinner used to be 'formal' every night except Saturday during term, but will now be 'formal' three nights per week, with the intention of giving these dinners more sense of occasion. Formal dinner simply meant that one had to wear one's gown to be admitted into Hall. Now they are less frequent, diners may choose to dress more smartly, but a dress code has not yet been established. Sunday dinners are very popular amongst students, so it is advisable to sign up early for these since spots are in high demand (sign up opens at 10am on Wednesdays).

To sign up for dinner, log on at <http://meals.keble.ox.ac.uk> using your bod card number (bottom right, above the barcode). This has to be done before 3pm on the day. There is also the facility to sign up guests (normally one per meal is allowed). If you have any dietary needs or are a vegetarian you can indicate this using the online sign-up facility. Should you want to invite more people, just send an email to the Steward in charge of Catering, Emile Hernandez (emile.hernandez@keble.ox.ac.uk), or Dining Hall Steward & Cafe Manager, Rich Gibbs

(richard.gibbs@keble.ox.ac.uk), who would both be delighted to sort out things with you. The webpage also contains information regarding meal times, who else has booked into hall, as well as the menu.

For formal dinner, the students of the College must be seated in Hall by 7:10pm, whereupon the Senior Common Room (SCR, college fellows) file into Hall. When they reach the High Table – an elevated table at the front of Hall – all members are expected to rise to hear grace in Latin (read at formals, but sung by the choir on Sundays) before the meal begins (the first time you hear the hammer striking the table may be a little surprising). Typical dinners consist of meat, potatoes and two vegetables with a pudding or fruit for dessert (vegetarian options are also available). Graduates usually congregate in the MCR prior to dinner and often dine on the three course table.

One privilege given to graduates is that up to four MCR members are allowed to dine at High Table on Thursday evenings during term at no extra cost. To sign up, simply reply to the MCR Secretary, who will send out an e-mail at the beginning of each term. The food on High Table is orders of magnitude better than that served to the junior members. There are certain formalities associated with dining on High Table:

- It is generally considered polite to talk to the person either side of you at dinner. Please note that High Table is a common table, and that if you wish to create a 'private party' for a specific group, then this is not the appropriate venue;
-Dress is smart and gowns are worn at dinner;
-If you have signed up, you are expected to attend.

The presiding Fellow, the Senior Tutor and/or the Deputy Senior Tutor will be on hand to advise.

Graduates are also invited to have lunch in the Senior Common Room (SCR) during the Easter and Long Vacations. During vacation, four graduates may have lunch every weekday and the same individual may sign up twice a week. Needless to say, lunch in the SCR is considerably better than lunch in Hall. Guests are not permitted, and any improper conduct may be reported by the SCR staff. Try to avoid only speaking to other MCR members in this setting, as the idea of the lunches is to encourage fraternisation between the common rooms.

Café Keble

During term-time, another daytime dining option for Keble students outside of hall is the Café Keble (Douglas Price room), located within the Sloane Robinson building in Newman quad. Here you can buy coffee, tea and sandwiches and read the latest newspapers. Many students use the café as a space for group study or informal meetings. All payments are made with your Bod card or cash.

Accommodation

Keble houses most of its incoming graduate students. The allocation scheme favours overseas students followed by EU and non-Oxford students. The Acland site that formerly housed most freshers has been demolished to be replaced by the H B Allen centre (if you're starting a three year course, you might call it home before you're done). There are a few rooms inside college (see De Breyne and Clocktower sections below) though the largest concentration of freshers will live on the University-owned Castle Mill site, a 20 - 25 minute walk from the college.

Housing for graduates in Keble is limited; in your second and subsequent years you will have to enter a ballot to determine whether you will get a college room for the next academic year. This will be held by the MCR Vice-President in January 2017 (no worries: reminders will be sent in due time).

You may contact the college Accommodation Manager (janet.knight@keble.ox.ac.uk) with questions and problems related to college accommodation.

Living in College (De Breyne and Clocktower rooms, not Castle Mill)

If you are living in College accommodation:

-Ensure that you have informed the College of your expected date of arrival.
- .. On arrival at the Lodge you will sign a nine-month tenancy agreement with the option of an extra three months over the summer (for extending your stay over summer; emails will be circulated in due time).

Keble has a well-equipped laundry room located down the stairs in the corridor connecting Liddon Quad to Hayward Quad. The machines are coin operated (£1 and 20p coins) and you need to supply your own detergent.

De Breyne Building

There are only a few rooms for post-graduates in College, and these are situated mainly in the De Breyne Building.

Y @Á[^ Á^c a fairly large room, furnished with a built-in sofa, bed, coffee table, desk and chair, network connection, washbasin, cabinet and a built-in wardrobe and a kitchenette. Pillows are provided. The rooms are arranged around a staircase shared by eight, with two graduates sharing a shower and toilet. The kitchenettes are fitted with a small refrigerator, two hot plates and a microwave oven.

Y @Á[^ Á^c your own linen and blankets/duvet, your own kitchen utensils (e.g. cutlery, pots, pans, kitchen towels etc.).

Ó^æ ð *: Every few mornings, a cleaner or 'scout' comes and empties the rubbish bin in your room. If you don't want the scout to enter your room in the morning you may leave your bin outside your door. Once a week, the scout will vacuum your room and clean your washbasin and mirror, but will certainly not tidy any personal mess.

Clocktower

There are around eight additional rooms available in the Clocktower, above the MCR and the JCR.

Y @A[~ A^d bed, desk and chair; each room is equipped with a mini fridge, a hot plate, a microwave and a sink. Ethernet and phone facilities are available in all rooms. There are four bathrooms, each shared between two people.

Y @A[~ A^d A!q * A!A ~ A! } A!ca your own linen and blankets/duvet, your own kitchen utensils (e.g. cutlery, pots, pans, kitchen towels etc.).

Ó^æ ð * See above.

Woodstock Road

Keble has managed to secure a number of rooms on Woodstock road.

Castle Mill

Keble has managed to secure a number of rooms within the university owned Castle Mill, while the H.B Allen centre is being built. Rooms are equipped with the basic furniture required; you will need to bring your own bed linen, kitchen utensils, and household items. Tenants are responsible for cleaning their own rooms; there is a cleaning service for shared areas. There are common rooms, cycle stores, and coin-operated laundry facilities on-site. The site is at the end of Roger Dudman Way, between the railway line and the river Thames. There is pedestrian and cycle access from the north.

This message is from the University Accommodation office regarding the arrival of Keble students to Castle Mill;

"They need to come to the Graduate Accommodation Office at 6 Worcester Street to sign their tenancy before heading for a check-in appointment with their caretaker on site at Castle Mill. As all nomination agreements start on 12 September, we will be basing a member of staff from the office at Castle Mill with the tenancy agreements available to sign there on the 12 September, as we are expecting a bulk intake. If they are going to be arriving outside of working hours, we would need them to confirm this at least 72 hours in advance, as we can

make arrangements for their tenancy agreement and keys to be sent over to Security Services to sign and collect at their offices.”

Contact for university accommodation office: graduate.accommodation@admin.ox.ac.uk

University Accommodation

As a University member you may also be able to get university accommodation. For that, you have to apply to the University Accommodation Office (<http://www.admin.ox.ac.uk/accommodation>). This is typically not in association with Keble College and is separate to college accommodation (unless you are in one of the Keble secured Castle Mill rooms).

Private Accommodation

Private accommodation varies widely in cost, quality and convenience. If you are living out of the College, it is worth coming to Oxford as early as possible to find a place to live. Accommodation in Oxford is expensive (average about £120 a week for students) and finding a place near your College or department can be difficult. The University Accommodation Office is the best resource and has a database of what's on offer. Another useful source of information is the www.dailyinfo.co.uk website. The most practical way to find accommodation is through the OxGradHousing (<https://www.facebook.com/groups/160632823948859/>) facebook group. Research students and those on two-year courses may need to secure this kind of housing in their second and subsequent years. If you are a first year student who has never been to Oxford and you need help with finding private accommodation, do not hesitate to email the MCR President or vice president listed on the MCR website. There is also a comprehensive guide available from OUSU that will be distributed around the time of the room ballot.

The Start of Term

In the first few weeks of Term, the MCR social calendar is jam-packed with events to help you settle, find your way around and meet the other Keble postgraduates. Freshers' Week officially kicks off with the Welcome Dinner on the Sunday of Noughth Week (make sure you sign up in advance by returning the slip in your Welcome Pack). This will most likely be your first opportunity to dine in Keble's magnificent hall, along with fellow freshers and current members of the MCR. The finalised timetable for noughth and first week is included in your welcome pack, events range from pub crawls, cocktail nights and bops to the more relaxed quiz nights, chocolate fountains and cinema trips. These events are a great way to get to know other new students at Keble, as well as current members, so make sure you get involved. Your college

advisor (a tutor in your field of study) will also be in contact regarding the Graduate Freshers' Dinner on the Wednesday of Noughth Week. You will meet with your advisor, and freshers on similar courses, for pre-dinner drinks before heading over to hall. If you don't hear from them during freshers' week, or have trouble getting in touch with them contact Penny Bateman penny.bateman@keble.ox.ac.uk, fountain of all Keble knowledge.

Besides socialising, there are a few other things you need to do in the first couple of weeks, such as registering with a GP, meeting the college nurse and attending the official college welcome (including the fire safety talk), on the Wednesday of Noughth week.

The University of Oxford runs orientation programmes for overseas students. If you are from overseas you will have probably received notification about such programmes already. If not, visit the international student webpage at www.admin.ox.ac.uk/io/. Depending on your nationality and visa requirements, you may need to undergo police registration. Registration costs £34 (take cash) and must be done within seven days of arrival in the UK. The nearest police station is on St Aldates, a little beyond Christ Church College, see www.ox.ac.uk/students/international_students/visaduring/police/ for more details.

General information

Financial

Soon after your arrival, you should visit the Bursary to check that your Battels Account is in order. You will be required to pay a £150 damage deposit, whether or not you live in college accommodation, and, for those living in, key deposits (£15 each) for your room key and BBKK (College) key. If there is a delay setting up your bank account or some other kind of problem with your finances, you should inform the Bursary immediately, as the staff can usually make arrangements. All the main banks in Oxford (Barclays, HSBC, Lloyds and Santander) are located on Cornmarket Street and generally offer accounts for students. If you are a non-EU student on a one-year course, you may not be eligible for a student account, but it is worth researching the banks in advance to check. If you are an international student, be prepared to provide evidence of your address in the UK and your student visa in order to set up a bank account (the best combination of documents to take are your passport, college enrolment certificate, and lease agreement).

Keble also has a number of travel and study awards available to students. The Keble Association is a registered charity that regularly supports students and can award grants to help with study and travel costs. The Faith Ivens-Franklin Travel Fund is for current graduates to help with any travel in connection to your academic work and the Graduate Study Support Fund awards grants for everything from course-related equipment to conference attendance. More information can be found at <http://www.keble.ox.ac.uk/students/student-support/graduate-specific-information/travel-awards>. There are also various funds that you can apply for if you find yourself facing financial hardship and more information can be accessed at

<http://www.keble.ox.ac.uk/students/student-support/financial-and-personal-support/financial-assistance>.

Shopping

There will be time in the first few days to shop for essentials, such as gowns, mortarboards, books, bicycles etc. There will be a bike sale at the Oxford Union (St Michael's Street) at the end of Freshers Week. Alternatively, you can buy a bike from bike shops on Cowley Road or Walton Street in Jericho. Argos and Boswells are good places to purchase kettles, cooking utensils, linen and other essentials for your room. The facebook group Oxford swap shop is platform for students to cheaply buy and sell all sorts of things and is worth becoming a member of. Gowns can be bought in the University Campus Stores and similar shops on Broad Street.

All major shops in Oxford are based around Cornmarket, Queens street and the High street.

MCR Leavers gift

Throughout your time here, former students will be supporting you and all current students through the Talbot Fund. Keble alumni fund student scholarships, bursaries, prizes, our outreach programme, extra-curricular activities (sport, music and drama) and help to restore and refurbish the wonderful buildings in which we live and work.

In 2016, the MCR voted for all its members to start their own tradition of alumni support for the next generation by opting in to making a donation of £20 to the Talbot Fund as they leave (the JCR started a similar tradition in 2013). By way of thanks,

MCR Leavers who make such a gift will receive a Keble 'brick' and become honorary members of the Talbot Society.

Members will be notified about the MCR Leavers Gift before they leave and receive details of how to allocate your gift to an area of choice and how to opt-out should you wish. For further information please contact the Alumni & Development Office.

Glossary

Subfusc: Oxford's academic dress. Oxford students must wear subfusc to all formal academic occasions; matriculation, some exams, DPhil vivas graduation etc. This consists of black shoes, dark socks or tights, dark trousers or skirt, white shirt with a bow tie or black ribbon, a black jacket or cardigan, mortarboard and academic gown. Subfusc is not required for formal dinner in hall, where you just need your gown.

This dress code is actually checked and enforced so it is a good idea to obtain the appropriate dress.

Graduates wear an 'advanced student's gown', which costs about £35. A mortarboard costs about £10. These can be bought from University shops such as the varsity shop on Broad street as a pack. Alternatively, if you wish, you may wear the gown and hood from your previous university.

Matriculation: It is compulsory that all students must matriculate or incorporate as members of the University at the beginning of their course, unless they are Visiting Students who are not part of one of the specific schemes recognised by the University. This consists of dressing up in subfusc (described above) and participating in the ceremony usually at the Sheldonian Theatre, performed partly in Latin. Before the ceremony a champagne reception is held in the MCR and a group and individual photographs are taken. The MCR usually also organises a party in the evening after the ceremony.

The vast majority of students matriculate but by an ancient arrangement graduates of Cambridge University and Trinity College, Dublin are permitted to incorporate their Cambridge or Trinity College, Dublin degrees. This means that your degree is incorporated in absentia at the earliest possible degree ceremony. Thus you do not participate in a ceremony. After incorporation, the number of terms elapsed since your matriculation at Cambridge or Dublin may count towards any degrees you may be eligible for at Oxford, and you may wear the Oxford academic dress for any degree you have incorporated. Contact the College Office for all enquiries regarding incorporation of degrees from Dublin or Cambridge.

The college will contact you with arrangements for your matriculation.

Some other essential terms (courtesy, Politics Department)

College bill: Term for accounts/bills for students and academics at their individual colleges, which can encompass anything from meals and accommodation to punt hire.

College servant: Official servant of the Vice-Chancellor.

College treasurer: Chief financial officer of a college.

