

Keble MCR



Handbook 2023-2024

Welcome to Keble MCR!

Dear Keble Freshers,

Congratulations on getting into Oxford, and a very warm welcome to our Keble College Middle Common Room (MCR)! “MCR” refers to both the *community* of graduate students as well as certain communal *spaces* for our graduate students. Whereas most colleges only have one room as their MCR, at Keble we have the luxury of having multiple MCRs! One is located on Keble “main site” (Parks road) and another one is in our graduate accommodation, the H B Allen Centre. Naturally, the MCR in HBAC is the one that is used more often, since so many graduates live here - but both MCRs are always open to every MCR student and you can come at any time you like to make use of those spaces - including the e-piano :) !

You might feel a bit nervous and anxious about not “fitting in” or “not belonging here”. It might surprise you to learn that this is how many graduate students feel when they come here. However, you got an offer for a good reason, and I’m sure you will do great in your time here. You deserve to be here as much as everyone else!

Oxford is not just about working hard, as you will learn quickly. It is also about building close friendships, exploring new hobbies, having fun! Our MCR community at Keble is a great way of exploring that side of Oxford. Our Fresher’s president, Yannik, and the rest of the committee have prepared an amazing schedule of activities right before your first term starts - you can look forward to sunset drinks, walks in the park, game nights, tours around Keble, a BBQ on main site, and so much more! I would encourage you to participate in as many events as your social battery allows to get to know other Freshers as well as other members of the MCR community! To keep up to date with the latest events and announcements, please join the [MCR 2023/24 Freshers WhatsApp group](#) and the [Facebook group](#) (yes, even if you’re under 30 years old ;))

After freshers’ week, our MCR committee will organise a multitude of events throughout the academic year that will give you the opportunity to relax and spend some quality time with your fellow Keblites - be it at arts and culture events, parties, picnics, game and movie nights, or wine and cheese nights with philosophical discussions about nothing and everything. It is very easy to feel guilty about taking breaks and work all the time. However, breaks are necessary to recharge and do your work more effectively! More importantly, by the end of your degree, it will be the memories you created with your friends that you’ll look back on fondly and will have made your time here so special!

This handbook introduces you to the MCR, to Keble in general, HBAC, life and tips about Oxford, and the people in the MCR and the college who can help you sort out any queries such as accommodation, finances, registration, academic concerns, and welfare. Please do reach out the wonderful members of our MCR Committee with any questions you might have.

Regardless of background or upbringing, you are now part of the Keble family, and we are all looking forward to meeting every one of you and welcoming you to the best college community in Oxford!

Laura Haas

Keble College - MCR President

Table of Contents

Welcome to Keble MCR!	1
Table of Contents	2
Glossary, Common colloquialisms and Useful Terms	5
Welcome Freshers!	8
MCR Committee - 2022/2023	9
The Executive Committee	11
The Welfare Team	12
EDI and Representation Team	13
The Social Team	15
Exchange Dinners, Black Tie and Selwyn Exchange	16
Sports Team	17
IT and Social Networks of the MCR	18
Subcommittees	18
Keble College Facilities	19
Keble Main Site	19
HB Allen Centre Facilities	20
College Sports Facilities	21
Life at Keble	23
Access to College and Facilities	23
Receiving Mail	23
Food at College	24
Bike Locking and Doctor	25
Sports and Teams at Keble	25
Rowing	25
Punting	25
Croquet	26

Yoga	26
Welfare	26
College Doctor	26
Small Grants and Scholarships	26
Financial Information for Keble College	26
Living in Oxford - General	27
IT	27
Accommodation	27
Weather	28
Dress	28
Bicycles	28
Cars	29
Buses and Walking	29
Passport photographs	29
Electricity	29
Visas, Customs, and Immigration	29
Financial - bank accounts	30
Working in the UK	30
Shopping	33
Sexual Health	31
Travelling to Oxford	31
From London	31
From Airports	31
By Bus	32
By Train	32
By Car	32
Associate members	32
Leaving the MCR	33
Key Contacts at Keble College	34

Maps	36
Keble College - Main Site	36
Keble College - H B Allen Centre (HBAC)	37
Oxford	37
Bodleian Libraries	37

Glossary, Common colloquialisms and Useful Terms

Find here some quick terms that are used throughout the college and Oxford!

Please also refer to the University's own list:

(<https://www.ox.ac.uk/about/organisation/history/oxford-glossary>)

- Battels: Term for accounts/bills for students and academics at their individual colleges, which can encompass anything from meals and accommodation to charity levies. To be battelled therefore refers to being charged for the amount on to one's battels - which is due to be paid during each term.
- Beadel: Official servant of the Vice-Chancellor.
- Bod: Bodleian, in reference to Bodleian library (Oxford's centralised library organisation).
- Bod card: University card, named after the Bodleian library.
- BOP: A party/disco held by a college, typically themed fancy dress (Big Organised Party).
- Bursar: Chief financial officer of a college.
- Carnations or Colour-coded flowers: A non-obligatory tradition for Oxford exams. You pin a white carnation (flower) [to your gown/sub-fusc] for your first exam, pink for your interim exam(s), and red for your final. The colour of the flower symbolises the blood from the heart of a student as they bleed all the knowledge they have acquired onto the exam paper: hence the darker the flower, the closer to their final exam.
- Collections: Exams, named as traditionally you would have to collect them from the Examinations School. Also, in reference to specific meetings.
- College Advisor: A postgraduate tutor in your field of study who is an initial point of contact within college for any academic issues and/or welfare concerns (both college or non-college) you may have whilst in Oxford. In some ways equivalent to the college's version of a personal tutor.
- Come Up: To arrive at Oxford.
- Congregation: Supreme governing body of the University, consisting of all academic staff and senior academic-related staff.
- Cuppers: Inter-college competition (could be sport and non-sport competitions).
- Degree Day: Dates throughout the course of the year when students may be presented with their degrees.
- Don: An academic or tutor.
- Fellows: Senior academics/appointed staff who serve as the trustees and governing body of a college (see SCR).

- Fob: A fob or keycard, all MCR members can get one from the porter's lodge at HBAC for the HBAC MCR and QCR.
- Go Down: To leave Oxford.
- Gowns: refers to the clothing/gown worn in exams, viva's, academic events and formal dinners. For MCR members the appropriate gown is the "advanced student gown" - a knee-length, plain black gown with long black streamers from the shoulders (see sub fusc). When events note "gowns required" this means you should wear your gown, but does not mean you have to wear full sub-fusc.
- Graduation: 1) The process of graduating; 2) Ceremony in the Sheldonian Theatre taking place on Degree Days where students are awarded their degrees.
- HBAC: H B Allen Centre refers to the main hub for the graduate community and the predominant concentration of Keble's graduate accommodation.
- High Table: The table at the end of the hall reserved for the SCR fellows. MCR members will have the chance to dine here at least once in their time at Oxford - demand is often high.
- JCR: Junior Common Room, denoting the body to which undergraduates belong too. It also dualistically refers to the physical space of the undergraduates (junior) common room.
- Lodge: Base of operations for college.
- Main Site: the old college buildings on Keble Road/Parks road.
- Main Site MCR: refers to the physical common room at the main site Keble College (see 28 on map).
- Matriculation: a formal ceremony which admits one into the University of Oxford. At Keble, this includes gathering at the chapel and then walking to a ceremony in the Sheldonian Theatre, usually this takes place in Week 1 on a Saturday (subject to universities timetable). Sub fusc should be worn at matriculation (see sub fusc).
- MCR: Middle Common Room, denoting the body to which graduates belong. (Masters, DPhils, visiting students, etc., i.e., us!). MCR also refers to the physical space of the graduate (middle) common room.
- MCR (HBAC): or HBAC MCR refers to the physical common room at the H B Allen Centre.
- Pigeon Hole (pidge): The University's internal mail system. The MCR pigeon's can be found in the Sarah Acland House in the HBAC.
- Punting: The activity of going along a river in a punt (= a long boat with a flat bottom that is moved by pushing against the bottom of the river with a long pole, similar to a gondola). Keble MCR has a punt at Cherwell Boathouse that can be used during Trinity and summer

- QCR (HBAC): or HBAC QCR refers to the Quiet Common Room, a study and work space in the H B Allen Centre.
- SCR: Senior Common Room, denoting the body to which fellows of the college (see fellow) belong too. This typically includes those working or teaching at the college.
- Sub fusc: Oxford's academic dress. Oxford students must wear subfusc to all formal academic occasions or events deemed "sub fusc must be worn"; matriculation, some exams, DPhil vivas graduation etc. This consists of black shoes, dark socks or tights, dark trousers or skirt, white shirt with a bow tie or black ribbon, a black jacket or cardigan, mortarboard and academic gown. Subfusc is not required for formal dinner in the hall, where you just need your gown (see gown). This dress code is checked and enforced so it is a good idea to obtain the appropriate dress. Graduates wear an 'advanced student's gown', which costs about £35. A mortarboard costs about £10. These can be bought from University shops such as the varsity shop on Broad street as a pack. Alternatively, if you wish, you may wear the gown and hood from your previous university.
- Tab: Student at Cambridge University.
- Terms: There are four; MT - Michaelmas Term (October-December); HT - Hilary Term (January-March); TT - Trinity Term (April-June); Long Vacation (July - September). For example, MT23 would be Michaelmas Term of 2023.
- Tutor: Academic who teaches students individually or in very small groups. They act as both teacher and academic advisor.

Welcome Freshers!

Welcome to the best college in Oxford! To make you feel at home from your first day in Oxford, we are organising various welcome events before and at the beginning of Michaelmas Term (the first of the 3 terms here). These events will commence mid- to end-September until the beginning of term (Week 0, 1st-7th October), after which events will be hosted by the MCR social team.

In Freshers' Week, we are planning heaps of fun events for you to meet each other and get to know Oxford. These will range from old favourites like a quiz night or sunsets on our terrace, to more classic 'Oxford' activities like a rowing taster session and a formal dinner in Keble dining hall. Our goal is to make Freshers Week as inclusive and welcoming as possible, like everything in Keble. Even though it can be daunting, we would love everyone to come along to a few events so we can foster a vibrant and diverse MCR community. It will be great fun, promise! More details will be shared closer to September, so keep an eye out for the full schedule on the [Facebook group](#), the [WhatsApp group](#), and in your email. In the meantime, if you have any accessibility requirements relating to Freshers' Week that the college isn't aware of, don't hesitate to contact me.

Before arriving in Oxford, you will also be connected with a college family, consisting of your '*parents*' (returning Keble students) and '*siblings*' (other freshers). Your college parents are a great point of contact for any questions you may have about day-to-day life at Keble.

Apart from socialising, there are a few other things you need to do in the first couple of weeks, such as registering with a GP, opening a bank account, getting a cellular mobile contract and attending the official College welcome events. But no worries, there will be a lot of guidance for all of that!

Yannik Schnitzer
Freshers' Week President
[\[yannik.schnitzer@keble.ox.ac.uk\]](mailto:yannik.schnitzer@keble.ox.ac.uk)



Yannik moved to Oxford from Germany last year, and is studying a DPhil in Computer Science. He just finished his Master's at Keble and is therefore technically also a Fresher again. Yannik loves going out for dinner or drinks, sunrise rowing sessions, throwing around all sorts of things in Uni parks, and a good picnic or BBQ at Port Meadow.

Yannik is passionate about fostering an inclusive and supportive MCR community, and cannot wait to welcome you all to Oxford and Keble.

MCR Committee - 2023/2024

Find below a list of all our current MCR Committee members for 2023/2024.

MCR Position	Holder for 23/24
President	Laura Haas
Vice President	Miles Judd
Treasurer	Youri Tamitegama
Secretary	Janet Botha
Freshers' Week President	Yannik Schnitzer
Welfare Officers	Megan Payne Ajantha Abey Michal Staniaszek
Equality and Diversity Officer	Sierra Sparks
Accessibility and Disability Officer	Eleanor Warrington
Environmental Officer	Tino Lukas
Oxford SU Officer	Chrishen Gomez
Entertainment Officers (Social Secretary)	Tess Eastgate Max Anderson Loake
Art and Culture Officer	Mary Whittingdale
Exchange Dinner Officer	Quincy van den Berg
Black-Tie Dinner Officer	Halley Rose Meslin
Selwyn Exchange Officer	Roxana Akhmetova

MCR Position	Holder for 23/24
Sports Officer	Malin Schlode
IT Officer	Kevin Wang
Cellar Steward	Halley Rose Meslin

The Executive Committee

The Executive Committee consists of the President, Vice President, Treasurer, and Secretary. The committee holds MCR meetings, occurring twice per term, and oversees the MCR budget. They also represent the MCR to the Governing Body of College, attending meetings with the Warden, Bursar, and Domestic Bursar.

On a more personal note, the Executive Committee officers are here to represent you and are willing to assist you with any issues you may have! Executive Committee officers are returning students to Keble MCR and know the ropes. Never hesitate to reach out with comments, ideas, and questions!



President – Laura Haas
(president@mcr.keble.ox.ac.uk)

Laura is a third-year DPhil student in Criminology, researching the effects of previous military service and deployment experiences on prison staff in the UK. Aside from directing the committee, Laura is here to answer any questions about the workings of the college or the MCR and can point you in the right direction if you need any help or advice. You'll most likely see Laura working in either HBAC café or Pret (..or tree artisan café, Jericho coffee traders, Peloton, or any of the other cozy cafés in Oxford). If she's not working, you'll find her in the gym lifting heavy stuff and suffering on the erg, or rowing in Port Meadow. She can't wait to meet you all!



Vice-President – Miles Judd
(vp@mcr.keble.ox.ac.uk)

Miles, a second-year DPhil student in Engineering Science, serves as the Vice President of the MCR. He effectively manages day-to-day operations, chairs the MCR meetings and acts as an authority on constitutional matters. Miles also represents the MCR in various committees, so feel free to reach out to him anytime. Moreover, if you're looking for a companion to join you in a lively game of Spikeball or Beachvolleyball, you can count on Miles to join in the fun.



Secretary – Janet Botha
[\(\[secretary@mcr.keble.ox.ac.uk\]\(mailto:secretary@mcr.keble.ox.ac.uk\)\)](mailto:secretary@mcr.keble.ox.ac.uk)

Janet is a DPhil student in Engineering Science looking at the effects of climate change on low-rise buildings. As secretary, she is responsible for weekly email notices and minutes during MCR meetings. When not sitting on her desk modelling soils and buildings, she can be found fencing, playing the guitar, or walking along Castle Mill stream and river Thames from Port Meadow to Folly bridge.



Treasurer - Youri Tamitegama
[\(\[treasurer@mcr.keble.ox.ac.uk\]\(mailto:treasurer@mcr.keble.ox.ac.uk\)\)](mailto:treasurer@mcr.keble.ox.ac.uk)

Youri is a third-year DPhil student in Mathematics. As treasurer, he is responsible for all financial matters related to Keble MCR. Outside of the office he enjoys rowing and playing ice hockey.

The Welfare Team

The MCR Welfare Team is composed of our Welfare and Equality Officers. Whatever difficulty, problem or stress you may be encountering in life – personal, academic, emotional, health, financial or otherwise – we are here for you, and hope you will feel encouraged to get in touch with any of us. We will see you in confidence, listen and support, and try to help in any way we can, and we hope to continue helping build a safe, comfortable and enjoyable community for all of you – one that values looking out for one another.

Welfare Officers act as a point of contact for all matters pertaining to welfare within the graduate community and liaise between central University and the MCR to continually improve Keble's welfare provision. They represent the MCR at Student Support Committee, Health & Safety, Domestic, and Welfare Committee meetings. Together with the Equality Officer, they seek to raise issues that affect the welfare of members of our community, and work towards ensuring that the needs of all members are heard fairly at College and University levels. To enhance community life and to bring members together, Welfare Officers organise weekly Welfare Teas/Branches which provide opportunities for the Keble MCR community to come together. They also provide contraception, pregnancy tests, panic alarms, lube, and dental dams.

2023-2024 Welfare Officers:

General Email: welfare-team@mcr.keble.ox.ac.uk



Megan Payne
(megan.payne@keble.ox.ac.uk)

Megan is a third-year DPhil student in Medical sciences, focusing on developing anti-inflammatory therapeutics from tick salivary proteins. Outside of the lab, she enjoys running, reading and socialising with friends (particularly over a nice glass of wine). Megan is looking forward to being a part of the welfare team, becoming a friendly face, is always happy to have a good chat and lend a listening ear.



Michal Staniaszek
(michal.staniaszek@keble.ox.ac.uk)

Michal is a 2nd year DPhil in Engineering Science based at the Oxford Robotics Institute in HBAC. His work is on automated decision making and scheduling for robots, so he spends much of his time in the robotics lab under the HBAC quad. Other than languishing in the basement, he is a frequent denizen of the HBAC gym (also in the basement), a Science Fiction and Fantasy reader, an improving rower, and occasional film photographer. He can easily be drawn into discussions of the various complexities of society. As part of the welfare team, he hopes to encourage everyone to treat themselves and others with kindness and empathy, while acknowledging structural issues in the often challenging academic environment (and elsewhere), and to ensure the MCR is a welcoming community which empowers everyone to shape their time at Oxford into its best form.



Ajantha Abey
(ajantha.abey@keble.ox.ac.uk)

Ajantha is a fourth-year DPhil student in the department of Physiology, Anatomy, and Genetics, doing dementia research. Ajantha is passionate about inclusion and making sure events, spaces, and groups are open to all, that people feel welcomed, and broadly creating a strong and close-knit community in Keble. As part of the welfare team, Ajantha is a trained peer supporter, and always ready to lend a listening ear and chat about anything, and help you navigate the vagaries of the Oxford system. They also love to talk about fandom, quadball, (neuro)science, photography, and spaghetti bolognese, and take photos for lots of our MCR events.

EDI and Representation Team

The role of the Equality, Diversity, Inclusion (EDI) and Representation Team is to be a source of advice for those who require support in equality matters, to promote equal participation of members in all aspects

of the MCR, and to discourage discrimination against any particular group. However, it remains the responsibility of every member of the MCR to discourage discrimination as any form of discrimination will not be tolerated by the Keble MCR. Keep an eye out for the new EDI subcommittee!

Officers for MT22:



Equality and Diversity Officer - Sierra Sparks **sierra.sparks@keble.ox.ac.uk**

Sierra is a second-year DPhil student from Canada, studying biomedical engineering in the department of Engineering Science. As a former ED&I fellow for the MPLS Division and a representative on the Department of Engineering Science's EDI Committee, Sierra is committed to ensuring that events and spaces are welcoming, equitable, and inclusive for everyone, both in and outside of the Keble MCR. Outside of her passion for EDI, Sierra loves rowing, walking around Oxford, playing piano, and frequenting Itsu for their 50% off sushi deals. Sierra is always happy to chat about EDI and other topics, so please do reach out at any time!



Accessibility and Disability Officer – Eleanor Warrington **eleanor.warrington@keble.ox.ac.uk**

I'm Eleanor, your MCR accessibility and disability officer for 2023/24!

I'm a 2nd year DPhil student in Engineering Science, specifically looking at Optics. Outside the lab, I enjoy practicing Taekwondo, frequenting the gym and going on the occasional run. I also love drumming and am slowly exploring all of the pubs in Oxford.

I'm here to make sure that all MCR events and college spaces are fully accessible and inclusive. I run termly accessibility meet up events to build a community and pass any issues or concerns onto college. Feel free to reach out to me with any questions!



Environmental Officer - Tino Lukas **tino.lukas@physics.ox.ac.uk**

Tino is a passionate environmentalist. That's why he is researching renewable energies (materials for solar panels) in his DPhil. He likes to travel (without flying!), go out dancing, go to music festivals, ski, and row badly for the Keble boat club. He is also a vegan, open-minded and understanding person. If you have ideas on how to make Keble more environmentally friendly, please let him know and he will be on your side.



Oxford Student Union Liaison – Chrisen Gomez
(chrishen.gomez@keble.ox.ac.uk)

Chrisen is a third year DPhil student in Zoology, studying the elusive predators of Borneo, using genomics and other nifty tech! When not trekking jungles, Chrisen can be found in one of the many pubs of Oxford, grabbing a pint with a random new friend he found somewhere between Oxfordshire and London. Coming from Malaysia, Chrisen is excited to bring a sense of community and belonging to the Keble community that roughly encompasses friends from every corner of the globe.

The Social Team

Whilst there are termly large-scale events to look forward to (Oxmas! Black Tie Dinners! Exchanges!) the Keble MCR typically aims to host smaller social events within the weeks of term. We host a wide variety of events, which includes our popular craft evenings, cultural trips, games nights, nature walks and picnics. Our events are often subsidised by the MCR and always are both alcohol-free and friendly, as well as considerate of other dietarys when applicable.

Our priority remains ensuring the safety of our members and we are certain that we will have a fun and memorable social season! Please do keep an eye on your emails and the [Facebook Group](#) and [WhatsApp Group](#) for information about events.

Entertainment Officers (Social Secretary) - (entz@mcr.keble.ox.ac.uk)

The social secretary oversees the organisation and running of social activities for the Keble MCR. It is a great position to fully immerse yourself in the Keble and Oxford community, in addition to adding some excitement and fun to both your Oxford experience and the experiences of your fellow Keblites! This year we have two social secretaries and one arts and culture officer, dedicated to activities that are equally as social!

Whilst the social team is committed to developing the best social season possible, we value the input of our members so if you have an idea or would like to run an event, please reach out to the social team. Please reach out to the team or the MCR secretary to get more information if you would like to help out!



Entertainment Officers – Tess Eastgate and Max Anderson Loake

[\(entz@mcr.keble.ox.ac.uk\)](mailto:entz@mcr.keble.ox.ac.uk)

Tess and Max are third year DPhil students – Tess studies French, and Max works on statistics and machine learning. Max enjoys beating Cambridge at swimming almost as much as he loves Taylor Swift karaoke; he's also a friendly face at the weekly 5k park run. Tess enjoys museum trips and long walks, and can often be found studying in a cafe, fuelled by a falafel wrap. They're both super excited to host BOPs, themed formal dinners, and other social events this Michaelmas. Don't hesitate to get in touch with them, and keep an eye out for the termcard of events!



Arts and Culture Officer - Mary Whittingdale

[\(mary.whittingdale@keble.ox.ac.uk\)](mailto:mary.whittingdale@keble.ox.ac.uk)

Mary is a second-year MPhil student in Theology studying early modern ecclesiastical history. She is a keen artist and can't wait to share her love of all things arts and craft with you! She hopes to put on a variety of events throughout the year – from weekly Bake Off nights and quill making workshops to sketching daytrips and museum talks.

Exchange Dinners, Black Tie and Selwyn Exchange

Formals and dinners are a big party of Oxford life, and through the Exchange Officer and Black-Tie Officer you will be able to experience some of the more Oxford(esque) aspects of Keble life - the various exchange dinners with colleges that can be organised and the termly anticipated black tie dinner!

Also look out for the Selwyn Exchange, which represents a unique opportunity for an exchange with our sister college in Selwyn College at the University of Cambridge. Though this is a very anticipated event, spaces are often limited with tickets going fast, so keep an eye out for it!

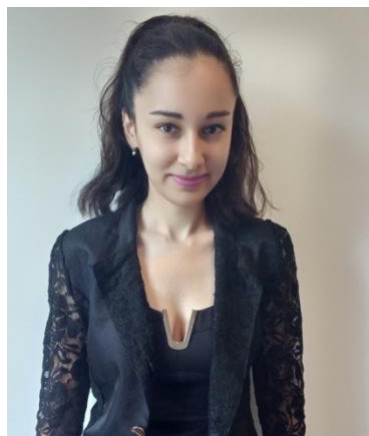
Officers for MT22:



Black Tie Dinner Officer & Cellar Steward – Halley Rose Meslin

black-tie-dinner@mcr.keble.ox.ac.uk

Halley Rose is a second-year MPhil student in Environmental Governance, focusing on sustainable food systems. Prior to Oxford, she worked at a winery in California. As Cellar Steward Halley Rose loves to host wine tasting events and is your go-to person for pairing recommendations. She is also this year's Black Tie Dinner Officer and is looking forward to organising Keble's highly anticipated termly soirées. Outside of Keble, Halley Rose competes on the Oxford University Contemporary Dance team and enjoys exploring Oxford's museums and parks.



Selwyn Exchange Officer (Cambridge) – Roxana Akhmetova

roxana.akhmetova@keble.ox.ac.uk

I am a 4th year DPhil in Migration Studies. My research is focused on how AI is used in the immigration and border control space and its impacts on the role of bureaucrats. I'm excited to put together the trip to our sister college in Cambridge - Selwyn in Hilary term.

Sports Team

There are a lot of different opportunities to engage with sports at Oxford, however, it can sometimes be quite confusing or frustrating, especially for those who are new to the university and still trying to navigate through everything that Oxford and Keble have to offer. Part of what makes sports at Oxford and Keble so great is that there are always opportunities to play or engage, regardless of your background or experience. In fact, it is quite common for many to start a new sport or hobby while at Oxford, be it rowing, tennis, boxing, or ultimate frisbee (see *Sports and Teams at Keble* under Life at Keble for more info).

If you're interested or curious, simply fill the form below to get started. Also, remember to watch out for more information on Keble's Sports Day event(s) during Freshers Week, where you'll get to meet the Sports Officer and various Club captains at Keble.



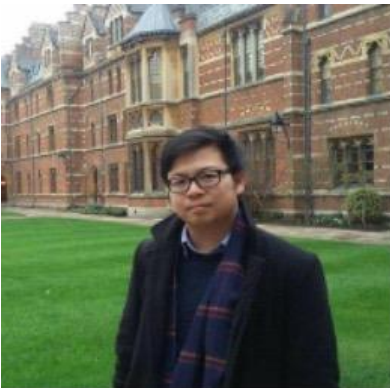
Sports Officer – Malin Schlode
(sports@mcr.keble.ox.ac.uk)

Malin is a 2nd year MPhil student in Social Anthropology focusing on digital capitalism and citizenship. Amongst Keble sports involvement, she plays Basketball and Badminton for university teams and is keen to get the MCR engaged in sports this year. If she isn't at Iffley Sports Center, you'll find her in the QCR or the HBAC café. Whether you're interested in playing casual football to hosting pool tournaments in the MCR to having Premier League watch parties (and many more ideas!), feel free to message her!

IT and Social Networks of the MCR

As the default way for communication within the MCR, we have two different mailing lists. The first one is the “[official](mailto:keblemcr@maillist.ox.ac.uk)” (keblemcr@maillist.ox.ac.uk) one and we would like to encourage you not to unsubscribe from it as important information is conveyed through this channel.

The second one is the “[social](mailto:keblemcr-social@maillist.ox.ac.uk)” (keblemcr-social@maillist.ox.ac.uk) one that is used for sending out information about social events. By the end of September, you should receive an email informing you that you have been added to both mailing lists. If this is not the case, please do not hesitate to contact our IT officer, who will add you. Besides that, the best way to stay in touch with what is going on is to check emails, check our [Facebook](#) page, check the [WhatsApp Groups](#) and also await our termly MCR events calendar.



IT Officer – Kevin Wang
(kevin.wang@keble.ox.ac.uk)

Kevin Wang is a DPhil student in Migration Studies, he is this year's IT Officer.

Keble College Facilities

Keble Main Site

Common Room (Main Site MCR)

The main room of the Keble MCR is the reading room and has many comfy sofas and an open fireplace which is often lit in the winter. It is an excellent place to work/relax in Oxford! Other Keble MCR facilities include a TV room with a Sky TV, a kitchen with a refrigerator, microwave and dishwasher, which everyone is free to use (see 26 on map, see last page). Disabled access to the Keble MCR is via Hayward Quad.

Main Site Porters' Lodge

The college porters are some of the most helpful people in college. The Porters' Lodge, located at the entrance to the College, is mainly responsible for security and post but can provide you with most of the practical information you need. Don't be afraid to ask questions. The Lodge is open 24 hours a day and the porters are there to help and support you. Disabled access is via the entrance to staircase 1 in Liddon Quad. The front college gate is locked after dusk but members can enter using their University student card (AKA Bod card).

- All keys for the squash court, main site gym, music room, etc. can be collected here (see College Sports Facilities).
- Call in case of emergency, phone number **+44 1865 272727**

Keble Library

Accessed using your University (Bod) card, Keble library is open 24 hours a day throughout the year, something you will really appreciate when university libraries close early during the holidays. The books within the library are largely geared towards undergraduate courses, although many graduates admit to being pleasantly surprised by its resources.

Graduates can request the library to stock a book for them, if it is sufficiently relevant to their studies. Similarly, you can ask your college advisor to place a request on your behalf. The library has a printer and two computers (printer use only) in the basement. Copying and printing costs will be charged to your college account (known as battels). You can also borrow DVDs, travel guides, and novels from the library. Please email (library@keble.ox.ac.uk) for any inquiries related to the library.

As members of the University of Oxford, we are able to access all Bodleian Libraries. Other college libraries are in general inaccessible, just as Keble is to those from other colleges.

IT Support

The college IT offices are also located here and they are a good first contact to help you with any computer problems for free. You get a university email account once you have registered. This is done through the Oxford University [Computer Services](#) and you will be sent all the necessary instructions before your arrival. Since email is the default means of communication within the university, it is important to activate your account as quickly as possible.

Chapel

The Keble chapel is one of the most impressive buildings in college and is open daily to everyone. The side chapel boasts the original ‘Light of the World’ painting by Holman Hunt, a reproduction of which is in St. Paul’s Cathedral. The Chapel holds daily services in accordance with the Church of England, including a Eucharist on Sunday evenings during term time at 5.30pm and Choral Evensong on Wednesdays at 6.00pm. The College Chaplain is Revd Fr Max Kramer (max.kramer@keble.ox.ac.uk). At the end of Michaelmas, there is a candlelit Advent carol service for Christmas which is always popular.

Dining Hall at Main Site

Keble College’s dining hall is one of the largest halls among the colleges of Oxford. During term time and vacation time, the College serves three meals a day, five times a week, and two meals (brunch and dinner) over the weekends. The meals offered by the College Hall are diverse and accommodating of all dietary requirements. Mondays are meat-free as part of the College’s commitment to sustainability. During term, there is a mix of informal (canteen format) and formals (3 course meal format). See *Food at College* in *Life at Keble*.

Keble Bar (main site)

Keble bar is a good social space in the college which provides an alternative to the MCR. With pints and even sometimes a pizza bar (usually open during weeks 1-8 of term though this will be subject to government guidance), this is a great place for a drink and a bite to eat at the end of the day. The bar is also complete with various games equipment including a Pool table and a Darts board.

HB Allen Centre Facilities

As the HB Allen Centre (HBAC) is where many MCR Members live, many (but not all) events will be held here. Those of you who do not live here will still have access to many of the facilities in HBAC and are recommended to register for a FOB (access disc or card) at the HBAC Porters’ Lodge (see below) as soon as possible so they can get access from the very start of their time at Keble!

Porters’ Lodge

The Porters at HBAC are a great resource for helping you settle at HBAC, even if you will not be living there. You can request your FOB from the Porters, which will give you access to MCR spaces. Packages will be delivered here and all graduate pidges (mailboxes) are located in the Acland building. If you can’t locate something, the Porters are sure to point you in the right direction!

Common Room (HBAC MCR)

There is an MCR located within HBAC. Equipped with large sofas, TV with Blu-ray player, Nintendo Switch, Pool table, Table Tennis, Fussball (or Table Football), Table Hockey, Cards Table (Bridge, Mahjong, and others), and kitchenette (including a dishwasher), the HBAC MCR is a great space to meet other graduates at Keble, hang out with friends and relax. We do, however, ask that all MCR members take responsibility to clean up after themselves and keep the MCR neat and pleasant for everyone.

QCR (Shilston room)

The Quiet Common Room (QCR) is a designated study space in HBAC. There are plenty of tables, chairs, and sofas available for studying and group work, as well as a kettle and sink for late night tea. There is also a coffee machine within the QCR generously sponsored by our alumni.

Café

The Café is located between the Porters' Lodge and the MCR. Snacks and pre-made food including pizzas, salads and sandwiches, are available here and can be purchased with your University (Bod) card. There are plenty of tables and seating for all members of college.

Laundry

HBAC has laundry facilities in the basement with four washers and dryers (although shared kitchens also have dryers). Laundry services (washing) are payable by card or Apple/Android/Google Pay and open 24 hours a day.

Gym

HBAC has its own gym, with 24 hours access. It's very well equipped! You must sign up to use it and there is a membership fee. Every individual must go through the Gym orientation before they get access. More information will follow either from the HBAC team or from members of the committee, concerning orientation, cost, and hours so keep an eye on your email!

Terraces

During Trinity Term and the Summer Period (end of April to usually around September), the Clara's Terrace is available to all members of the MCR during daylight hours. The terrace is accessible via Staircase 5. The door onto the terrace will be unlocked by the Porters at the start of the day and locked at its end - the hours of opening and closing are published at the Porter's Lodge at the HBAC. Members on the terrace at closing time should respect the instructions of the porters and/or the Sub Dean.

The terrace may be used for relaxation, private or group study, and meetings with friends and colleagues. There is a second terrace, the How High Terrace, which is also available to members of the MCR subject to the approval of the Sub-Dean at least seven days in advance. This terrace is reserved for organised events and such gatherings are subject to the Sub-Dean's absolute discretion and availability. The terrace, however, needs to normally be sponsored by the MCR Committee or by a Fellow of the College.

College Sports Facilities

The College is well equipped with sports facilities, with its own sports ground on Woodstock Road, a boat house on the banks of the Isis as well as one at Godstow, and an on-site College gym. The College is situated across the road from the University Parks, which provides further facilities in close proximity to the College.

Keble College's sports ground is 10 minutes north of the main site on Woodstock Road (69 Woodstock Rd, Oxford OX2 6HL). In the summer Cricket is played and the sports ground offers two artificial cricket nets

and two grass nets. Other team sports, notably rugby and hockey, are also played in the University Parks, opposite the main site.

Remember to book all pitches and courts (including matches) with the Adrian Roche, the **Garden and Grounds Manager (<https://www.keble.ox.ac.uk/people/adrian-roche/>)**

Squash Courts

Keble College members have access to a squash court with showers, changing rooms, and observation gallery. It is accessed via St. Cross Road, backing onto the University Club Sports Ground. A Membership Application Form, along with Terms and Conditions, can be obtained on the Keble website or from the Porter's Lodge. The membership fee is £15/year, irrespective of the time of year you choose to join and is payable by a charge to your college account (battels).

Boathouses

The College has two boat houses, one on the banks of the Isis (Thames) amongst the main college boathouses, and another on the Isis at Godstow. There are opportunities for novices to begin rowing in eights.

University Sports Facilities

Graduates can make use of the University's sport facilities, many of which are located at the Iffley road site which is a 10-15 minute cycle from Keble, or 30 minute walk.

Life at Keble

As a graduate, life can be strung between multiple different components. This could mean much of your time at your department, libraries, pubs or even the comfort of your room. The college system in Oxford provides a unique community and space to which you can enhance your time here. At Keble, we are particularly interested in aiding not only your academic goals but also those beyond. The college and our MCR community therefore will aim to host multiple events throughout the year for social activities, hang outs and in general great ways to socialise and relax with the wider community here at Keble. As mentioned, the social calendar will be sent out soon on your arrival and you have many events during the Freshers period to look forward to starting from week -1 (2 weeks before term starts which this year is 24th of September, and term starting on 8th of October - known as week 1).

This section therefore provides some of the more staple aspects of life at college and with the MCR Community beyond the facilities and the wonderful events to look out for (which you will be notified of closer to the time).

Access to College and Facilities

Please note again, that access to the main site Keble is done via your BOD Card (Student ID card). This is used to open the main doors, bicycle gates, MCR, and Library (most of which are 24/7 during term time).

HBAC is accessed via a fob or card (which you can get via the HBAC lodge). This fob will give you access to the HBAC MCR, QCR and main doors at HBAC. The same fob will be used for those who sign up to use the HBAC gym, though this must first be confirmed with the HBAC lodge.

Remember, if you have any questions, don't hesitate to ask any of the committee or that of the relevant lodges (main site Keble Lodge and HBAC Lodge).

Receiving Mail

All full-time graduates should have 'Pidges' (mailboxes), which are located in the Sarah Acland building on the ground floor. Whether you live in HBAC or not, your campus and external post will be sent to your pidge here (situated in the Sarah Acland Building). Part-time students might not always get a pidge for post, however, post can be delivered to the HBAC address and collected at the lodge. Executive Degrees such as EMBA's and MMPM's can receive post through the HBAC porters lodge.

- For large packages and mail delivered to the HBAC porters, pick up times are set between
 - 7:30 - 8:30
 - 13:30-14:30
 - 18:00-20:00 on weekdays
 - On weekends, the evening slot is 18:00-19:00
- Mail for those who do not have pidges can be collected at more extended times.

If there is any issue, please ask the HBAC lodge, who are always happy to help.

Food at College

Currently, members are required to book Monday-Friday lunch/dinner meals by 10:30 morning, and meals for Saturday-Sunday need to be booked by 11:30 of the preceding Friday. Breakfast and brunch currently do not require booking. Booking of meals is done through the [College portal](https://meals.keble.ox.ac.uk/oxbooking/) (<https://meals.keble.ox.ac.uk/oxbooking/>) and is charged to your student account (battels), which can be viewed through the same portal under Fees & Charges. The price of hall meals varies, though for 2022-2023, vegetarian lunches and dinners were approximately £5.00, whilst meat was £6.00. However, these prices may be subject to change. Formals and Black-Tie Dinners will cost more and are typically sit-down three course dinners. You can invite a set number of guests (usually between 1 and 2) for formals. However, there are additional charges for guests.

The times of the hall, as well as the availability of dining in-hall are subject to government guidance. All hall menus are sent out by the Keble Dining team every week (hall.supervisor@keble.ox.ac.uk). Dining times for 2022-2023 were typically:

Meal-Times during term (Week 1- 8)

Meal Type	Days	Time	Description
Breakfast	Monday – Friday	0800-0930	Cafeteria style
Brunch	Saturday – Sunday	1030-1200	Cafeteria style
Lunch	Monday – Friday	1230-1345	Cafeteria style
Informal Hall	Monday, Wednesday, Thursday and Saturday	1800-1930	Cafeteria style
Formal Hall	Tuesday, Friday and Sunday	Be in hall by 1900	Three course meal, wear gowns. Booking is required and closes on the day in the morning (usually before 10:30am, Friday morning for Sunday Formal).

*these are currently provisional times, updates will be provided throughout the term from the hall supervisor.

Out-of-term timetables are subject to college timetables. Formals do not run outside of term time and lunch, brunch and informal hall require pre booking via the portal. Breakfast (during the week) does not require pre-booking in vacation times.

HBAC Café and Keble Bar

The Café is located between the Porters' Lodge and the MCR and the Keble Bar is within the main site. Using your Bod Card or bank card, snacks and pre-made food including pizzas, salads and sandwiches, are available here. There are plenty of tables and seating for MCR use in both facilities.

Bike Locking and Doctor

Both Keble Main Site and HBAC offer a space to lock your bike throughout your time at Keble College. A registration and corresponding sticker will need to be attached to your bike, otherwise staff will remove your bike. You can go to both corresponding porter lodges to get a relevant sticker for parking your bike at Keble Main Site and HBAC. Note that the spaces to lock your bikes in HBAC are accessible by the public, so make sure you also get a strong lock (see Bicycles under Living in Oxford - General).

Every term, there will also be a Bike Doctor available at HBAC in Mickie Lane (beside the bike racks in HBAC). The bike doctor will be here once to twice each term and it is free to get your bike checked up. If any repairs are needed, you will be charged for any replacement parts.

Sports and Teams at Keble

At Oxford, you can play sport at University ('Blues') or college level. While the Blues teams tend to be a bit more serious, taking part in college sports or university clubs can be a great way to meet new people, stay active, benefit your physical and mental health, fuel (or temper) your competitive edge, and help build discipline and mental strength. All teams at Keble and beyond also have a great social scene and people often form strong bonds with their respective teammates! In Keble, there are various MCR specific teams including football and cricket. When there is low demand for a particular sport, members of the MCR can join the JCR sports clubs and teams. When combined with the JCR you can get involved with anything from Rowing and Hockey to Dancesport and Croquet. That doesn't mean there aren't other new sports on offer if you fancy them: Keble MCR members have joined university teams such as Lacrosse, Quidditch, and Australian Rules Football so there should definitely be something on offer for you! Similarly, if there is something you would like to start or feel there is enough demand for in the MCR, e.g., the Keble MCR Polo team that was started last year, then please get in touch with the Sports Officer, who can help you get started. For more information about what is available in Keble and Oxford, have a look at the Sports page on the MCR website or get in touch with the Sports Officer.

Rowing

If you want to get involved in an iconic Oxford sport, it is hard to go past rowing. The Keble College Boat Club is one of the best college rowing teams, and welcomes anyone from complete novices to powerhouse athletes! Each term has one major regatta, with the Christ Church regatta in Michaelmas term (for novices only), Torpids in Hilary term, and Summer Eights in Trinity Term. Even if you choose not to get involved in rowing, the regattas have a great atmosphere, so we encourage everyone to come down and cheer on Keble. If you are keen to row, keep your eyes on the [Facebook](#) and [WhatsApp groups](#) at the start of Michaelmas term, or contact the Open Novice Captain Jamie (jamie.todd@keble.ox.ac.uk) or Women's Novice Captain Rowena (rowena.field@keble.ox.ac.uk).

Punting

Punting, one of the iconic activities of Oxford, is also offered for social use through the College; Keble MCR has a punt rented at the Cherwell Boathouse that can be booked during the Trinity Term and Summer. Keble MCR students will only have to pay a fraction of the fee for the use of multiple hours. Details regarding the punt and how to book it will be sent out closer to the time (most likely Easter 2024).

Croquet

The MCR has a croquet set it shares with the JCR that can be borrowed! Ask an MCR member for the details!

College Doctor

When you come to Keble, you must register with an Oxford doctor. Keble prefers that you register with the Jericho Health Centre on Walton Street (less than half a mile away). Information about how to do this will be provided by the college before you arrive. If you need to see a doctor, you can always call and make an appointment (01865 429993). UK residents, and some overseas students are entitled to free health care under the National Health Service, so be sure to find out if you are covered. You can also ask the nurse for recommendations of dentists and other specialists.

There is also a College nurse (pml.keblenurse@nhs.net), available for a couple of hours every weekday during term time (weeks 1 to 8) for minor treatments. The nurse will be holding her surgeries in Somerville College, a two-minute walk from Keble, as we share a nurse between our neighbouring colleges Somerville College and Green Templeton College.

The college nurse can see you for minor illness, minor injury, mental health, contraception and sexual health issues as well as providing support and advice for you to manage any ongoing health conditions that you may have.

Times and locations are accessible via (<https://www.keble.ox.ac.uk/people/rachel-slater/>)

The nurses often provide a mixture of appointments and will be able to provide some advice via email or telephone as before. Appointments may be booked by emailing the college nurse.

Rachel is usually based in Darbshire 16, Somerville college (ask the Somerville Porter) and her relevant telephone number is 01865 270608. Alternatively:

- College Doctors for Somerville and Keble at the Observatory Medical Practice tel: 01865 429993
- Call 111 for 24 hour medical assistance or www.111
- Only call 999 in a medical emergency

Small Grants and Scholarships

<https://www.keble.ox.ac.uk/admissions/graduates/scholarships/>

Financial Information for Keble College

Soon after your arrival, you should visit the Bursary to check that your Battels (Student) Account is in order. You will be required to pay a £150 damage deposit, whether or not you live in college accommodation and key deposits (£15) for your room key if living in College. If there is a delay in setting up your bank account or some other kind of problem with your finances, you should inform the Bursary immediately, as the staff can usually make arrangements. More accurate and relevant information can be found [here](#).

At the end of each term, you will have to pay your battels (you will receive an email) but you can do it before if you prefer. You can see all your charges and pay your battels [here](#).

Living in Oxford - General

IT

Remember to set up your Eduroam (which is remote access not SSO) (to which you can change the password and gain subscriptions to other programmes <https://register.it.ox.ac.uk/self/index>).

Remember to also check your details to the university, records, and fill in your termly Graduation Self Reporting (GSR) at Student Records (<https://www.ox.ac.uk/students/selfservice/>).

If you have any college related issues, or personal IT issues, remember you can visit the college IT staff (situated in the old site under the warden's lodgings).

Accommodation

College Accommodation

The 'recently' built H B Allen Centre brings 2/3rds of Keble's graduate students onto one site offering top-quality accommodation and fantastic supporting facilities. It has 231 en-suite rooms for postgraduate students. Of these, 191 are arranged in 32 self-contained flats, each with a spacious communal kitchen/dining room. The remaining 40 are individual rooms with their own kitchenette. For further information, see the Keble [dedicated website](#).

Notably, if you do NOT live in HBAC, you can – and indeed, are encouraged to – visit the building and use the spaces there, such as the MCR and QCR, the café and the gym!

University Accommodation

As a University member, you may also be able to get accommodation owned and managed centrally by the university. For that, you must apply to the [University Accommodation Office](#). This is typically not in association with Keble College and is separate to college accommodation.

Private Accommodation

Private accommodation varies widely in cost, quality, and convenience. If you are living out of the College, it is worth coming to Oxford as early as possible to find a place to live. Accommodation in Oxford is expensive (average about £170-£200 a week for students) and finding a place near your College or department can be difficult. The University Accommodation Office is the best resource and has a database of what is available. Another useful source of information is the [Daily Info](#) website. The most practical way to find accommodation is through the [OxGradHousing](#) Facebook group. Research students and those on two-year courses may need to secure this kind of housing in their second and subsequent years. There is also a comprehensive guide available from OUSU that will be distributed around the time of the room ballot.

Weather

In the summer months (May - August), Oxford can be hot and sunny and in the winter (October - February) it can be cold and snowy (snowing heavily every few years, with 2021 January bringing a day of heavy snow followed by some flurries), and it will also rain at any time of the year (October 2020 being one of the heaviest on record!). So, while you are also packing thick jumpers for the coming term you may exchange these for cotton shirts and swimming costumes come Trinity term. It is also worth noting that whilst the H B Allen Centre provides radiators in each room and can provide fans upon request in the summer months, dressing appropriately is the best.

For the first term (Michaelmas - MT) warm layers, a reliable, waterproof jacket are essential. Second term (Hilary - HT) may still be chilly, especially for those from warmer climates though there are sporadic days reaching 20° C. The third, and final, term (Trinity - TT) is often warmer - especially when relative heat waves pass through Oxford and the UK. Temperatures have been known to reach 30° C in such conditions, though some buildings in Oxford can feel warmer.

Dress

Dress around the University is informal. There are several occasions such as guest dinners, subject and club dinners, and balls where the dress code can be black tie (tuxedo / formal cocktail dress); attendance at these events is however completely optional and specific dress is not tightly enforced. At Keble we have a moderate and open mind to traditions, so do feel free to join in, though also do not feel stringent. If however you want to go all out, tuxedos and dresses can usually be hired, though second hand/cheaper ones can be bought in town. Though, as mentioned often there are not stringent requirements for dress codes. The exception is events that require sub fusc (matriculation and graduation). Other useful items of clothing are a smart jacket and tie and a full-length dress, according to your preference.

Specific attire is also required for formal university occasions such as matriculation and examinations (see '[sub fusc](#)' in the glossary), which typically comprises of a gown, white blouse/button-up/shirt, black trousers/skirt, black shoes, dark socks/black stockings, white bow tie/black ribbon and a mortar board/soft cap. Such garments can usually be obtained in Oxford, though most students opt to only purchase the gown, mortar board/cap, and bow tie/ribbon at the [store](#).

Bicycles

The bicycle is synonymous with Oxford. Cycling is a very popular means of transport in Oxford as it is a fast and affordable way to get around town. While it is more affordable to bring your own bicycle from home, this isn't always an option and there are a number of bike shops around the city. Unfortunately, where there are bicycles there is bicycle theft and it is advised that you spend a little money on a D-lock and always lock your bike to a solid object such as a rack.

There is a large second-hand bike turnover in Oxford. The Facebook group '[Buy and Sell Cycling Stuff in Oxfordshire](#)', is a good place to look for a bike if you want to buy one second hand. Or you can always check the Facebook Marketplace and Gumtree for available bikes. There are bicycle racks around the perimeter of the College and plenty of bike racks at Keble Main Site and HBAC. These racks are particularly secure as it is only accessible to members of Keble, and the area is monitored by CCTV. If you

wish to use these facilities, please register your bike with the Porters' Lodge (main site and in HBAC) when you arrive. A helmet is also strongly recommended, and it is a legal requirement to use bike lights (white at the front and red at the back) after dark. You can be stopped and fined for not using them. Removable bike lights (to prevent theft), locks, and other things can be purchased from the [university security services](#) at a reduced rate.

Cars

Parts of the city centre are only accessible to pedestrians and public transport, and parking space is limited. There are short-stay parking spaces close to college and HBAC. There are also spaces at Norham Gardens which is a five-minute walk. To use these parking spaces, you need to purchase a parking ticket, which tends to be quite expensive. If you are living in private accommodation, you may be entitled to a resident's parking permit, and you should speak to your landlord. Students are not able to park cars within College grounds. HBAC has temporary parking spaces which can be booked by emailing Zdenka for 2 hour periods - used primarily in aiding with moving in and out of accommodation.

Buses and Walking

For those who wish to avoid having a car or bicycle in Oxford, it is quite possible to walk to most locations. Most destinations are within 5 to 20 minutes walking from Keble, although distant locations such as the JR Hospital, Churchill Hospital, and Headington are easily accessible by the comprehensive city bus system (or by bicycle).

Passport photographs

You will probably find it useful to bring copies of recent passport-sized photographs. Membership and discount cards often require a photo of this kind. An instant-photo machine is also available in Boots, the pharmacy on Cornmarket street.

Electricity

British electricity is 240/220 volts and 50 Hz and runs through the large three-pin outlets (rectangular shaped pins).

Visas, Customs, and Immigration

If coming from abroad, ensure that you have the appropriate entry documents on hand before leaving home. Depending on your country of origin, this may include your letter of admission to the college or your department in addition to your Tier 4 visa. Before travelling to the UK, check the UK Border Agency website and/or your local UK Embassy for more information. Remember (at least for your UKBA Landing Card) that your address in College/HB Allen Centre is: Keble College, Parks Road, Oxford, Oxfordshire, OX1 3PG or HB Allen Centre, 25 Banbury Road, Oxford OX2 6NN. It is advisable when clearing border control to carry all the documentation used when applying for the student visa, particularly CAS documentation. If in doubt, also get in contact with your department about this, they are the ones who normally deal with visa issues.

Financial - bank accounts

All the main banks in Oxford (Barclays, HSBC, Lloyds and Santander) are located on Cornmarket Street and generally offer accounts for students. If you are a non-EU student on a one-year course, you may not be eligible for a student account, but it is worth researching the banks in advance to check. If you are an international student, be prepared to provide evidence of your address in the UK and your student visa in order to set up a bank account (the best combination of documents to take are your passport, college enrolment certificate, and lease agreement).

Keble also has a number of travel and study awards available to students. The Keble Association is a registered charity that regularly supports students and can award grants to help with study and travel costs. The Faith Ivens-Franklin Travel Fund is for current graduates to help with any travel in connection to your academic work and the Graduate Study Support Fund awards grants for everything from course-related equipment to conference attendance. More information can be found at:

<http://keble.ox.ac.uk/student/student-support/graduate-specific-information/travel-awards>.

There are also various funds that you can apply for if you find yourself facing financial hardship and more information can be accessed at:

<http://keble.ox.ac.uk/students/student-support/financial-and-personal-support/financial-assistance>.

Phone Contract / Number

Even if you do not think you need one, you will have to get a UK phone number. It's essential for registering and communicating with a GP, or even smaller things like ordering food. You can get a Sim-card basically everywhere, such as Tesco or Sainsbury's.

Working in the UK

Depending on your Visa and Course Classification (e.g. DPhil) you may be able to work for a limited number of hours a week. If you are planning on doing this, remember you will need a National Insurance Number in order to work in the UK, and it is a fairly lengthy process in terms of wait time so it is best to apply as soon as you can. You can work without one while the process is underway (as long as you are eligible to work according to your visa), and should provide your employer with it as soon as you have it. If you have pre-settled or settled status, you may prove your right to work via a shared code (see link below).

Shared Code: <https://www.gov.uk/prove-right-to-work/get-a-share-code-online>

See: <https://www.gov.uk/apply-national-insurance-number>

Shopping

There will be time in the first few days to shop for essentials, such as gowns, mortar boards, books, bicycles etc. There will usually be a bike sale at the Oxford Union (St Michael's Street) at the end of 0th Week. Alternatively, you can buy a bike from bike shops (Cowley Road or Walton Street). Argos online, Tesco, Sainsbury's, and John Lewis in the Westgate Mall are good places to purchase kettles, cooking utensils,

linen and other essentials for your room. The Facebook group Oxford swap shop is a platform for students to cheaply buy and sell all sorts of things and it is worth becoming a member if interested. Gowns can be bought in the University Campus Stores and similar shops on Broad Street and High Street. All major shops in Oxford are based around Cornmarket, Queens (including the Westgate Mall) and the High Street.

Sexual Health

Through the college you will have access to welfare officers (both students and staff) who are available for information and support. Do speak to the welfare team if you need any information. Nevertheless, due to the NHS, most contraceptive prescriptions are free. Pregnancy termination is legal and free in England.

- The Oxfordshire Sexual Health Clinic at the Churchill Hospital provides a broad range of services including contraceptives, HIV, STD and pregnancy testing. These can be mailed to you and have free express shipping. 01865 231231 (<https://www.sexualhealthoxfordshire.nhs.uk/>)
- Terrence Higgins Trust provides HIV-related info and support. 08451 221200 (<https://www.tht.org.uk/>)
- You can self-refer to an abortion provider for any reason, for example the British Pregnancy Advisory Service. (<https://www.bpas.org/>)

Travelling to Oxford

The below information is under normal circumstances; please check government information and relevant plane, train, bus or traffic and travel websites before making any travel plans:

From London

- One hour by train from Paddington Station in London. A longer (over an hour), but cheaper train can be found leaving from Marylebone Station in London. Booking in advance with the [National Rail](#) or [Trainline](#) is the cheapest option (both of these have Android/Apple applications that can be downloaded to virtually secure your ticket).
- Around two hours by bus from Victoria. The options are ‘[Oxford Bus Company](#)’ (X90) or ‘[Oxford Tube](#).’

From Airports

- From Birmingham Airport (BHX), the train is the easiest option and it only takes one hour.
- From Heathrow Airport (LHR) and Gatwick Airport (LGW): The bus service - Oxford Bus Company’s ‘[The Airline](#)’ is one of the easiest ways to navigate to Oxford. Travel from Heathrow takes 90 minutes and costs £23 (single) and from Gatwick takes 2.5 hours and costs £28 (single). Different types of return tickets can be bought, depending on when you will be returning to the airport.
- National Express coach service offers regular services from all of the major airports: Heathrow, Gatwick, Luton and Stansted.

By Bus

- Gloucester Green Bus Station is the closest stop for those heading to Keble or the HB Allen Centre. Anyone arriving on a bus/coach from the North (i.e. Banbury/Woodstock) get off at the ‘Keble Road’ stop or the stop opposite the old Radcliffe Infirmary. Keble and the HB Allen Centre are both about a safe 15 minute walk from Gloucester Green bus station or 20 minutes from the train station. A taxi from the bus station or train station to Keble should cost around £5 - £10. (001 Taxi’s phone number: 01865 240000).

By Train

- Rail and bus passes can be useful if you plan to travel in the UK while at Oxford. A Young Person’s [Railcard](#) is available at the rail station for those 25 and under or full time mature students for about £30 and will entitle you to one third reduction with off-peak rates. You can buy a one-year [National Express](#) Coachcard for £10, which gives you discounts of up to 30% on National Express fares throughout Great Britain. Two passport-sized photos are typically required though much of this can also be achieved online. Uploading a passable passport photo and processing payment allows a virtual Railcard to immediately be accessed through the mobile app. Further, bus passes are also available from the Oxford Tube, Oxford Bus Company, Stagecoach and Oxford Citylink companies.

By Car

- If you arrive by car, a limited number of short-stay parking places are available outside the college on Keble Road for you to unload your car. Arrangements can be made with the Porters of the H B Allen Centre should you need to unload your belongings.

Associate members

Some individuals who are not current graduate students at Keble but who are connected with college are able to become associate members of the MCR for a small fee (£50/year or £20/term). They are able to enjoy many aspects of the MCR; they are added to the mailing list, can play in the sports teams, are able to attend all events and are eligible to run for non-executive committee positions. Additionally, they have access to both the main site and HBAC MCR. Access to the first is obtained through your BOD card; a FOB can be obtained from the HBAC porters for the second. To become an associate member, individuals must either be a previous MCR member or the partner of a current MCR member. Please see the application form on the MCR website or contact the secretary for more details. This is a particularly good opportunity if you have a long-term partner or spouse coming to Oxford with you (sometimes it can be more difficult for them to integrate into a social scene). The associate membership gives them an excellent opportunity to quickly integrate into a common social scene.

Form(https://mcr.keble.ox.ac.uk/wp-content/uploads/2022/07/AssociateMembershipForm_19-corrected.doc)

Rules (https://mcr.keble.ox.ac.uk/wp-content/uploads/2020/09/RulesForAssociateMembership_2018.pdf)

Leaving the MCR

Throughout your time here, former students will be supporting you and all current students through the Talbot Fund. Keble alumni fund student scholarships, bursaries, prizes, our outreach programme, extra-curricular activities (sport, music and drama) and help to restore and refurbish the wonderful buildings in which we live and work. In 2016, the MCR voted for all its members to start their own tradition of alumni support for the next generation by opting in to making a donation of £20 to the Talbot Fund as they leave. By way of thanks, MCR Leavers who make such a gift will receive a Keble ‘brick’ and become honorary members of the Talbot Society. Members will be notified about the MCR Leavers Gift before they leave and receive details of how to allocate your gift to an area of choice and how to opt-out should you wish. For further information please contact the Alumni & Development Office.

Key Contacts at Keble College

Welfare

<i>Position</i>	<i>Name</i>	Contact email
Welfare fellow & Chaplain	Revd Fr. Max Kramer	chaplain@keble.ox.ac.uk
Senior Tutor	Ali Rogers	senior.tutor@keble.ox.ac.uk
Harassment Officers	Professor Diane Purkiss	dianepurkiss@btinternet.com
	Dr Alfonso Bueno Orovio	alfonso.bueno@cs.ox.ac.uk
Junior Deans	Zachary Oliver	junior.deans@keble.ox.ac.uk
	Bhadrajee Hewage	
Student Support Officer	Aimee Rhead	TBC
College Nurse	TBC	pml.keblenurse@nhs.uk
On-site Counsellor	Kirsty Hunter	counsellor@keble.ox.ac.uk

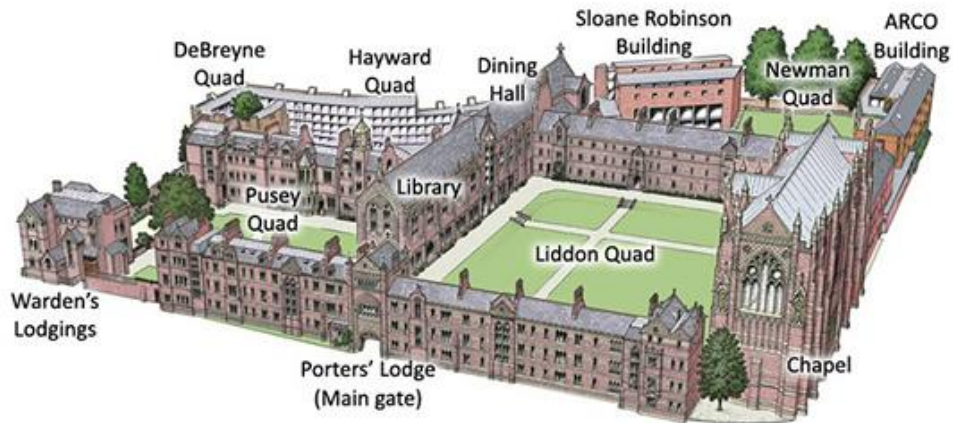
Administrative

Position	Name	Contact
Academic Director (HBAC)	Jeremy Fix	jeremy.fix@keble.ox.ac.uk
Financial Controller	Michael Hill	michael.hill@keble.ox.ac.uk
Accounts Assistant	Hien Le	hien.le@keble.ox.ac.uk
College Office	Penn Bateman	college.office@keble.ox.ac.uk
	Vicky Archibald (admissions)	
IT Office	Steve Kersley	it-support@keble.ox.ac.uk
	Jacob de Goris Jedrzejowski	

Housekeeping	Mirjana Haouam	mirjana.haouam@keble.ox.ac.uk
Porters Lodge (HBAC)	various	hbac.porters@keble.ox.ac.uk
Porters Lodge (Main Site)	various	porter.lodge@keble.ox.ac.uk
Maintenance	Log via online form	Online form

Maps

Keble College - Main Site



Quads

- 1 De Breyne
- 2 Hayward
- 3 Liddon
- 4 Newman
- 5 Pusey

Entrances

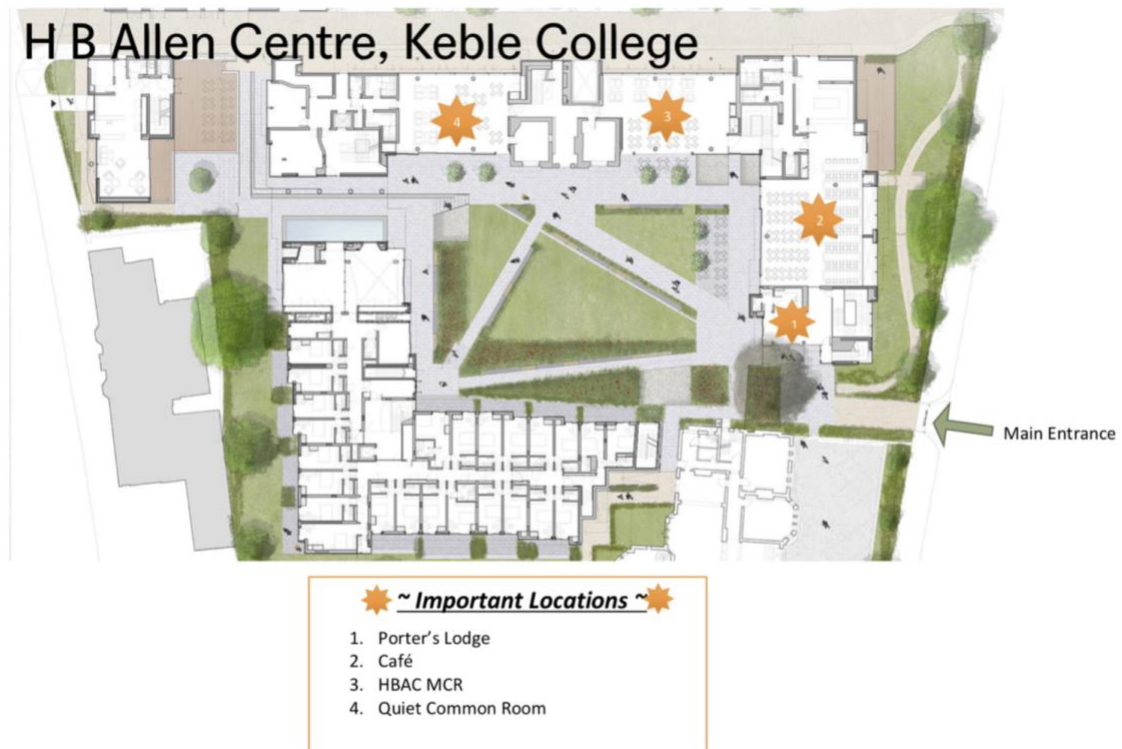
- 6 Arco Gate
- 7 Chapel-side Gate
- 8 Lodge Entrance
- 9 Magic Gate
- 10 Maintenance Only Gate
- 11 Sloane Robinson Gate
- 12 Vehicle Access Gate

Buildings/ Places

- | | |
|--------------------|----------------------------------|
| 13 Arco | 24 Liddon (West, Lodge & Chapel) |
| 14 Bar | 25 Maintenance |
| 15 Bike Racks | 26 MCR |
| 16 Chapel | 27 Offices |
| 17 De Breyne | 28 Porters' Lodge |
| 18 Gibbs Room & IT | 29 SCR |
| 19 Hall | 30 Toilets |
| 20 Hayward | 31 Warden's Lodgings |
| 21 JCR (Gym below) | 32 Washing Machine Room |
| 22 Sloane Robinson | |
| 23 Library | |



Keble College - H B Allen Centre (HBAC)



Oxford

Please refer to this Oxford Freshers Map, made by the JCR:

Keble Freshers' Map -

<https://www.google.com/maps/d/viewer?mid=11bYT6XIIYokDKt5RQhwwnR6B-sg&usp=sharing>

Bodleian Libraries

Please refer to:

https://www.bodleian.ox.ac.uk/sites/default/files/bodreader/documents/media/map_of_libraries_2021_0921.pdf

As members of the University of Oxford, we are able to access all Bodleian Libraries. Other college libraries are in general inaccessible, just as Keble is to those from other colleges.