

Keble MCR



Handbook 2024-2025

Welcome to Keble MCR!

Dear Keble Freshers,

Congratulations on getting into Oxford, and a very warm welcome to our Keble College Middle Common Room (MCR)! “MCR” refers to both the *community* of graduate students as well as certain communal *spaces* for our graduate students. Whereas most colleges only have one room as their MCR, at Keble we have the luxury of having two! One is located on Keble “main site” (Parks road) and another one is in our graduate accommodation, the H B Allen Centre. Naturally, the MCR in HBAC is the one that is used more often, since so many graduates live here - but both MCRs are always open to every MCR student, and you can come at any time you like to make use of those spaces.

I remember feeling nervous and overwhelmed before joining Oxford, as most students do. All of that disappeared once I met the MCR community – I’m certain you’ll see what I mean when you get here. You’ll often hear how to “make the most of Oxford”. Don’t put unnecessary pressure on yourself, just relax and enjoy your time!

The University rhymes with hard work, but also with hobbies and friendships. You’ll find endless opportunities to explore new sports and activities in College. You’ll also have plenty of opportunities to meet like-minded students in the MCR, in your department, and in the University. On that note, our Freshers’ president, Max, and the rest of the committee, have prepared an amazing schedule of activities right before your first term starts – you can look forward to sunset drinks, walks in the park, pub quizzes, games nights, tours around Keble, and so much more! I’ve seen a fair share of freshers’ events by other colleges around Oxford, and I’m happy to (objectively) report that Keble MCR has the best freshers’ week of all. I encourage you to participate to as many events as your social battery allows so you can meet fellow freshers and other members of the community! To keep up to date with the latest events and announcements, please join the [MCR 2024/25 Freshers WhatsApp group](#) (and follow @keblemcr on Instagram).

Following freshers’ week, the MCR will have a multitude of events during the academic year (Week 1 to Week 8 every term). Pay close attention to the release of the MCR Term Card, where all the events for the upcoming term are listed. Jess, our illustrious social secretary, will be sending the Michaelmas one very soon. We host board games nights, bar exchanges and bar crawls, themed formal dinners in Hall, wine tastings, student talks (“Cheese & Why”), BOPs (Big Organised Parties), art workshops, Sunday brunch, and much, much more!

This handbook introduces you to the MCR, to Keble in general, HBAC, life and tips about Oxford, and the people in the MCR and the college who can help you sort out any queries such as accommodation, finances, registration, academic concerns, and welfare. Please do reach out the wonderful members of our MCR committee with any questions you might have. Regardless of background or upbringing, you are now part of the Keble family. I hope your time in Oxford will be as special as it is to me. I’ll be at most freshers’ events; I look forward to seeing you there!

Amaury Genovese

Keble College - MCR President

Table of Contents

Welcome to Keble MCR!	1
Table of Contents	2
Glossary, Common colloquialisms and Useful Terms	4
Welcome Freshers!	7
MCR Committee - 2023/2024	8
The Executive Committee	10
The Welfare Team	11
EDI and Representation Team	13
The Social Team	14
Exchange Dinners, Black Tie and Selwyn Exchange Rep	15
Sports Team	17
IT and Social Networks of the MCR	18
Keble College Facilities	19
Keble Main Site	19
HB Allen Centre Facilities	20
College Sports Facilities	21
Life at Keble	23
Access to College and Facilities	23
Receiving Mail	23
Food at College	24
Bike Locking and Doctor	25
Sports and Teams at Keble	25
Rowing	26
Punting	26
Croquet	26
College Doctor	26
Small Grants and Scholarships	27
Financial Information for Keble College	27
Living in Oxford - General	27
IT	27
Accommodation	27
Weather	28

Dress	28
Bicycles	29
Cars	29
Buses and Walking	29
Passport photographs	29
Electricity	30
Visas, Customs, and Immigration	30
Financial - bank accounts	30
Phone Contract / Number	30
Working in the UK	31
Shopping	31
Sexual Health	31
Travelling to Oxford	31
From London	32
From Airports	32
By Bus	32
By Train	32
By Car	33
Associate members	33
Leaving the MCR	33
Key Contacts at Keble College	34
Maps	36
Keble College - Main Site	36
Keble College - H B Allen Centre (HBAC)	37
Oxford	37
Bodleian Libraries	37

Glossary, Common colloquialisms and Useful Terms

Find here some quick terms that are used throughout the college and Oxford!

Please also refer to the University's own list:

(<https://www.ox.ac.uk/about/organisation/history/oxford-glossary>)

- **Battels:** Term for accounts/bills for students and academics at their individual colleges, which can encompass anything from meals and accommodation to charity levies. To be batteled therefore refers to being charged for the amount on to one's battels - which is due to be paid at the beginning of each term.
- **Beadel:** Official servant of the Vice-Chancellor.
- **Bod:** Bodleian, in reference to Bodleian library (Oxford's centralised library organisation).
- **Bod card:** University card, named after the Bodleian library.
- **BOP:** A party held by a college, typically themed fancy dress (Big Organised Party).
- **Bursar:** Chief financial officer of a college.
- **Carnations or Colour-coded flowers:** A non-obligatory tradition for Oxford exams. You pin a white carnation (flower) [to your gown/sub-fusc] for your first exam, pink for your interim exam(s), and red for your final. The colour of the flower symbolises the blood from the heart of a student as they bleed all the knowledge they have acquired onto the exam paper: hence the darker the flower, the closer to their final exam.
- **Collections:** Exams, named as traditionally you would have to collect them from the Examinations School. Also, in reference to specific meetings. Mostly relevant for undergraduate students.
- **College Advisor:** A postgraduate tutor in your field of study who is an initial point of contact within college for any academic issues and/or welfare concerns (both college or non-college) you may have whilst in Oxford. In some ways equivalent to the college's version of a personal tutor.
- **Come Up:** To arrive at Oxford.
- **Congregation:** Supreme governing body of the University, consisting of all academic staff and senior academic-related staff.
- **Cuppers:** Inter-college competition (could be sport and non-sport competitions).
- **Degree Day:** Dates throughout the course of the year when students may be presented with their degrees.
- **Don:** An academic or tutor.
- **Fellows:** Senior academics/appointed staff who serve as the trustees and governing body of a college (see SCR).

- Fob: A fob or keycard, all MCR members can get one from the porter's lodge at HBAC for the HBAC MCR and QCR.
- Go Down: To leave Oxford.
- Gowns: refers to the clothing/gown worn in exams, viva's, academic events and formal dinners. For MCR members the appropriate gown is the "advanced student gown" - a knee-length, plain black gown with long black streamers from the shoulders (see sub fusc). When events note "gowns required" this means you should wear your gown but does not mean you have to wear full sub-fusc.
- Graduation: 1) The process of graduating; 2) Ceremony in the Sheldonian Theatre taking place on Degree Days where students are awarded their degrees.
- HBAC: H B Allen Centre refers to the main hub for the graduate community and the predominant concentration of Keble's graduate accommodation.
- High Table: The table at the end of the hall reserved for the SCR fellows. MCR members will have the chance to dine here at least once in their time at Oxford. Students can join High Table on Wednesday – the sign-up form will go out a week before.
- JCR: Junior Common Room, denoting the body to which undergraduates belong too. It also dualistically refers to the physical space of the undergraduates (junior) common room.
- Lodge: Base of operations for college.
- Main Site: the old college buildings on Keble Road/Parks road.
- Main Site MCR: refers to the physical common room at the main site Keble College (see 28 on map).
- Matriculation: a formal ceremony which amidst one into the University of Oxford. At Keble, this includes gathering at the chapel and then walking to a ceremony in the Sheldonian Theatre, usually this takes place in Week 1 on a Saturday (subject to universities timetable). Sub fusc should be worn at matriculation (see sub fusc).
- MCR: Middle Common Room, denoting the body to which graduates belong. (Masters, DPhils, visiting students, etc., i.e., us!). MCR also refers to the physical space of the graduate (middle) common room.
- MCR (HBAC): or HBAC MCR refers to the physical common room at the H B Allen Centre.
- Pigeonhole (pidge): The University's internal mail system. The MCR pigeons can be found in the Sarah Acland House in the HBAC.
- Punting: The activity of going along a river in a punt (= a long boat with a flat bottom that is moved by pushing against the bottom of the river with a long pole, similar to a gondola). Keble MCR has a punt at Cherwell Boathouse that can be used during Trinity and summer and only costs 5 pounds for us.

- QCR (HBAC): or HBAC QCR refers to the Quiet Common Room, a study and workspace in the H B Allen Centre.
- SCR: Senior Common Room, denoting the body to which fellows of the college (see fellow) belong too. This typically includes those working or teaching at the college.
- Sub fusc: Oxford's academic dress. Oxford students must wear subfusc to all formal academic occasions or events deemed "sub fusc must be worn"; matriculation, some exams, DPhil vivas graduation etc. This consists of black shoes, dark socks or tights, dark trousers or skirt, white shirt with a bow tie or black ribbon, a black jacket or cardigan, mortarboard and academic gown. Subfusc is not required for formal dinner in the hall, where you just need your gown (see gown). This dress code is checked and enforced so it is a good idea to obtain the appropriate dress. Graduates wear an 'advanced student's gown', which costs about £35. A mortarboard costs about £10. These can be bought from University shops such as the varsity shop on Broad street, Shepherd & Woodward on High Street or Walters on Turl Street as a pack. Alternatively, if you wish, you may wear the gown and hood from your previous university.
- Tab: Student at Cambridge University.
- Terms: There are three: MT - Michaelmas Term (October-December); HT - Hilary Term (January-March); and TT - Trinity Term (April-June). For example, MT24 would be Michaelmas Term of 2024.
- Tutor: Academic who teaches students individually or in very small groups. They act as both teacher and academic advisor.

Welcome Freshers!

Welcome to the best college in Oxford! To make you feel at home from your first day in Oxford, we are organising various welcome events before and at the beginning of Michaelmas Term (the first of the 3 terms here). These events will commence end of September until the beginning of term (Week 0, 6th-12th October 2024), after which events will be hosted by the MCR social team.

In Freshers' Week, we are planning heaps of fun events for you to meet each other and get to know Oxford. These will range from old favourites like a quiz night or sunsets on our terrace, to more classic 'Oxford' activities like a rowing taster session and a formal dinner in Keble dining hall. Our goal is to make Freshers Week as inclusive and welcoming as possible, like everything in Keble. Even though it can be daunting, we would love everyone to come along to a few events so we can foster a vibrant and diverse MCR community. It will be great fun, promise! More details will be shared closer to September, so keep an eye out for the full schedule on the [WhatsApp group](#), and on your email. In the meantime, if you have any accessibility requirements relating to Freshers' Week that the college isn't aware of, please don't hesitate to contact me.

Apart from socialising, there are a few other things you need to do in the first couple of weeks, such as registering with a GP, opening a bank account, getting a cellular mobile contract and attending the official College welcome events. But no worries, there will be a lot of guidance for all of that!

Max Anderson Loake (he/him)

Freshers' Week President

[\[max.andersonloake@keble.ox.ac.uk\]](mailto:max.andersonloake@keble.ox.ac.uk)



Max moved to Oxford from Western Australia and is studying a DPhil in Statistics and Machine Learning, now in his fourth year! Max enjoys cycles to Queenford lake, Taylor Swift club nights/karaoke, having people round for dinner, beating Cambridge at swimming, playing board games, and water fights at Port Meadow.

Max is passionate about fostering an inclusive and supportive MCR community, and cannot wait to welcome you all to Oxford and Keble.

MCR Committee - 2023/2024

Find below a list of all our current MCR Committee members for 2023/2024.

MCR Position	Holder for 24/25
President	Amaury Genovese
Vice President	Christopher Kuhl
Treasurer	Savannah Milton
Secretary	Iulia Kis
Freshers' Week President	Max Anderson Loake
Welfare Officers	Julian Dalli Adam Bush Laura Haas
Equality and Diversity Officer	Suleika Norrbom
Accessibility and Disability Officer	Andrew Garrett
Environmental Officer	Tino Lukas
Oxford SU Officer	Afonso Rodrigues
Entertainment Officers (Social Secretary)	Jessica Nixon
Art and Culture Officer	Kira Mulcahy
Exchange Dinner Officer	Heather Clark
Black-Tie Dinner Officer	Kamran Lamb
Selwyn Exchange Officer	Jeffery Pendleton

MCR Position**Holder for 24/25**

Sports Officer

Cameron Bowman

IT Officer

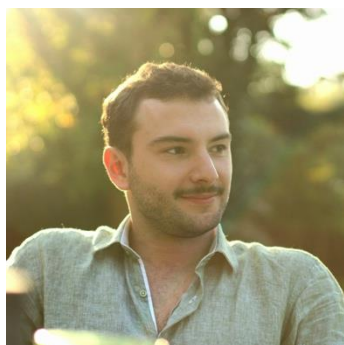
Laura Haas

Cellar StewardJohannes Riese

The Executive Committee

The Executive Committee consists of the President, Vice President, Treasurer, and Secretary. The committee holds MCR meetings, occurring twice per term, and oversees the MCR budget. They also represent the MCR to the Governing Body of College, attending meetings with the Warden, Bursar, and Domestic Bursar.

On a more personal note, the Executive Committee officers are here to represent you and are willing to assist you with any issues you may have! Executive Committee officers are returning students to Keble MCR and know the ropes. Never hesitate to reach out with comments, ideas, and questions!



President – Amaury Genovese (he/him)
president@mcr.keble.ox.ac.uk

Amaury is a second-year DPhil student in Cardiovascular Sciences, looking at how heart cells communicate with the immune system after a heart attack. Aside from directing the committee, Amaury is here to answer any questions you have about the workings of the college or the MCR and can point you in the right direction if you need any help or advice. You'll most likely see Amaury wandering around the Oxford colleges, lifting the lightest possible weights at the gym, having a celebratory pint at the Jericho Tavern, or fixing broken hearts.



Vice-President – Christopher Kuhl
vp@mcr.keble.ox.ac.uk

Christopher Kuhl (= “Cool”), is in his second year of the MPhil in Theology at Keble College. As Vice President he manages day-to-day operations and acts as an authority on constitutional matters. He also represents the MCR on a number of committees in Keble College. And, on most Saturdays, you can find Christopher running with fellow Keblites at ParkRun in University Parks—all is welcome (WhatsApp message reminder is sent out every Friday)!



Secretary – Iulia Kis
[\(secretary@mcr.keble.ox.ac.uk\)](mailto:secretary@mcr.keble.ox.ac.uk)

Iulia is a Romanian second year DPhil student, researching DNA damage and repair in the Oncology department. As secretary, Iulia is in charge of weekly emails, MCR meeting motions and social media, so you can expect to see her name pop into your inbox quite often. When not in the lab taking care of cells, she can be found bouldering, cycling or baking some sort of sweet treat for her friends.



Treasurer – Savannah Milton
[\(treasurer@mcr.keble.ox.ac.uk\)](mailto:treasurer@mcr.keble.ox.ac.uk)

Savannah is a second-year DPhil student in Archaeology. As treasurer, she is responsible for all financial matters related to Keble MCR. Outside of reading about digital preservation and looting she can usually be found dancing salsa, playing board games, or kickboxing in the Keble gym.

The Welfare Team

The MCR Welfare Team is composed of our Welfare and Equality Officers. They work with College staff and other members of our community to promote health and wellbeing in the Graduate Community. Our objective is to help build maintain a safe, comfortable and enjoyable community for all of you – one that values looking out for one another.

Welfare Officers represent the MCR at Student Support Committee, Health & Safety, Domestic, and Welfare Committee meetings. Together with the Equality Officer, they seek to raise issues that affect the wellbeing of members of our community. To enhance community life and to bring members together, Welfare Officers organise weekly Sunday welfare brunches and other events which provide opportunities for the Keble MCR community to come together. They also provide contraception, pregnancy tests, panic alarms, lube, and dental dams.

Most information related to Welfare at Keble, including the College Welfare Team, can be found here: <https://www.keble.ox.ac.uk/current-students/student-wellbeing-welfare/>

2024-2025 Welfare Officers:

General Email: welfare-team@mcr.keble.ox.ac.uk



Julian Dalli
(julian.dalli@keble.ox.ac.uk)

Julian is a second-year MPhil student in Christian ethics, focusing on the legitimacy of public institutions, the origins of and potential responses to corruption, and the role of religion in public discourse. When not contemplating theology and politics, Julian can be found cheering for his favourite football team (Juventus), exploring nature through running and hiking, or immersed in a good book. He also loves a board game night and enjoys writing poetry. Julian is very much looking forward to being a part of the welfare team, becoming a friendly face, and is always happy to have a chat or lend a listening ear.

Adam Bush

(adam.bush@gtc.ox.ac.uk)



Adam is a 3rd-year Graduate-Entry Medicine student based at Oxford University Hospitals and Oxford Health NHS trusts. His research work includes nanoparticles for non-invasive cancer therapy, normothermic machine perfusion in transplant surgery, and using radiomics for predicting interoperative outcomes in major hepatectomy. He is very enthusiastic – albeit with notable lack of skill – about baseball, photography, weightlifting, and old 90s tv shows about motor racing. As part of the welfare team, he hopes to encourage a sense of community within the MCR and support all members to be able to make the most out of their time at Oxford.



Laura Haas (she/her)
laura.haas@keble.ox.ac.uk

Laura is a fourth-year DPhil student in Criminology, researching how previous military service and trauma from deployments influence prison officers in the UK. To distract her from the grim realm of prison research, she loves to do sports - you'll find her lifting weights in our gym in the HBAC basement, rowing in port meadow, or playing frisbee. Otherwise, she loves to hang out with her friends and play board games! As part of the welfare team, Laura wants to help make the MCR a space of empathy, kindness, and inclusiveness where everyone feels comfortable. If you have any welfare-related issues at all, or suggestions for events, please don't hesitate to reach out to her!

EDI and Representation Team

The role of the Equality, Diversity, Inclusion (EDI) and Representation Team is to be a source of advice for those who require support in equality matters, to promote equal participation of members in all aspects of the MCR, and to discourage discrimination against any particular group. However, it remains the responsibility of every member of the MCR to discourage discrimination as any form of discrimination will not be tolerated by the Keble MCR. Keep an eye out for the new EDI subcommittee!

Officers for MT24:

Equality and Diversity Officer - Suleika Norrbom
suleika.norrbom@keble.ox.ac.uk

Accessibility and Disability Officer – Andrew Garrett
andrew.garrett@keble.ox.ac.uk



Andrew is a second year MPhil student studying economics. Previously, he has earned a masters degree in development economics and bachelors degrees in economics, political science, and Japanese. Andrew currently serves on the economics department EDI committee and is committed to fostering an academic community that provides every student with the tools that they need to excel. Having been diagnosed with a disability, he understands that the university and supporting structures can often be obstacles rather than assets to the student experience. He is interested in rock climbing, gaming, taekwondo, ballroom dancing, etc. If anyone has any questions or comments please do not hesitate to reach out.



Environmental Officer - Tino Lukas (he/him)
(tino.lukas@physics.ox.ac.uk)

Tino is a passionate environmentalist. That's why he is researching renewable energies (materials for solar panels) in his DPhil. He likes to travel (without flying!), go out dancing, go to music festivals, ski, and row badly for the Keble boat club. He is also a vegan, open-minded and understanding person. If you have ideas on how to make Keble more environmentally friendly, please let him know and he will be on your side.



Oxford Student Union Liaison – Afonso Rodrigues
(afonso.rodrigues@keble.ox.ac.uk)

Afonso is a 4th year DPhil student in Economics from Portugal, going on his 6th year living in Oxford and at HBAC. While trying to avoid every MCR event possible, Afonso can be found going hard at the gym, throwing people around at Judo practice at the Iffley Road Sports Centre, and talking about his undergrad glory days in the Netherlands. Afonso is ready to represent Keble students over at the Student Union and is open to any questions regarding the SU's campaigns and role in making Oxford a welcoming, safe and inclusive place to live and study.

The Social Team

Whilst there are termly large-scale events to look forward to (Oxmas! Black Tie Dinners! Exchanges!) the Keble MCR typically aims to host smaller social events within the weeks of term. We host a wide variety of events, which includes our popular craft evenings, cultural trips, games nights, nature walks and picnics. Our events are often subsidised by the MCR and always are both alcohol-free and friendly, as well as considerate of other dietaries when applicable.

Our priority remains ensuring the safety of our members and we are certain that we will have a fun and memorable social season! Please do keep an eye on your emails and the [WhatsApp Group](#) for information about events.

Entertainment Officers (Social Secretary) - (entz@mcr.keble.ox.ac.uk)

The social secretary oversees the organisation and running of social activities for the Keble MCR. It is a great position to fully immerse yourself in the Keble and Oxford community, in addition to adding some excitement and fun to both your Oxford experience and the experiences of your fellow Keblites! This year we have two social secretaries and one arts and culture officer, dedicated to activities that are equally as social!

Whilst the social team is committed to developing the best social season possible, we value the input of our members so if you have an idea or would like to run an event, please reach out to the social team. Please reach out to the team or the MCR secretary to get more information if you would like to help out!

Entertainment Officer – Jessica Nixon (she/her)
entz@mcr.keble.ox.ac.uk



Jess is a second-year MPhil student reading Medieval English Literature, researching gynecological and architectural metaphors in devotional, medicinal, and alchemical literatures. When she's not chasing the elusive origins of the seven chambered womb in ancient tomes, she can be found at one of the many watering holes across Oxford, nursing a pint in jovial company. As your social secretary, she is devoted to the Good Times, whether that looks like leading the late-night charge towards thumping tunes, mingling amongst the MCR over mugs of hot chocolate, or gathering folks to watch whatever is the recent silver screen phenomena. If in doubt, she's the tall blonde one – please always say hello!

Arts and Culture Officer – Kira Mulcahy (she/her)
kira.mulcahy@chem.ox.ac.uk



Kira is a second-year DPhil student in polymer chemistry. Despite having zero talent, she loves art and crafts and can spend hours wandering around a museum or gallery. In the next year, she hopes to organise a variety of events, so if you have any new crafts you'd like to try, or cool places you think the MCR should visit don't hesitate to get in touch.

Exchange Dinners, Black Tie and Selwyn Exchange Rep

Formals and dinners are a big party of Oxford life, and through the Exchange Officer and Black-Tie Officer you will be able to experience some of the more Oxford(esque) aspects of Keble life - the various exchange dinners with colleges that can be organised and the termly anticipated black tiwele dinner!

Also look out for the Selwyn Exchange, which represents a unique opportunity for an exchange with our sister college in Selwyn College at the University of Cambridge. Though this is a very anticipated event, spaces are often limited with tickets going fast, so keep an eye out for it!

Officers for MT24:

Exchange Dinner Officer – Heather Clark (hclark@keble.ox.ac.uk), she/her



Heather is a first-year DPhil student in Oncology, focussing on immune radiation biology. Aside from academics, Heather enjoys sports, exploring new places and meeting people. She hopes to organise several dinners in colleges across Oxford so that members of Keble can engage with the wider Oxford community and enjoy tasty food and drink. She hopes these events will be lots of fun and allow integration between the colleges.



Black Tie Dinner Officer – Kamran Lamb (black-tie-dinner@mcr.keble.ox.ac.uk)

Kamran Lamb is a second year MSc student in Energy Systems, focusing on climate-tech and smart devices. He also works part time for the UK government's Energy Department.

He will be continuing in his role as Black Tie Dinner Officer this year, after having planned the Valentines and Great Gatsby themed dinners last year. Black Tie dinners are a great opportunity to get dressed up and enjoy spending time together with friends from Keble in the grandeur of the Parks Road site.

Outside of this, he loves board games (you are pretty likely to see him at one of the Keble MCR board game nights), sport and cooking.

Cellar Steward – Johanne riese (johannes.riese@keble.ox.ac.uk)



Johannes Riese is a second-year MPhil student in European Politics and Society, focusing on coalition governments in Scandinavia. Outside of academics, Johannes loves anything related to racquet sports, so he is always up for ranting about tennis. He aims to organise several wine tastings this year and various other related beverage events as well as visit some wine cellars at different colleges. The tastings aim to cater to everyone, whether it is your first tasting or if you are a sommelier.



Selwyn Exchange Officer (Cambridge) – Jeffery Pendleton
(jrlp2@cam.ac.uk) He/Him

I am a 2nd year Psychology PhD Candidate at the University of Cambridge, and a member of Selwyn College (Keble's Sister College) as well as their MCR Executive Committee. My first research project looks at differential experiences and perceptions of time as influenced by language. My other project looks at the evolutionary ecology of psychometric traits in urban environments. Outside of academic life I enjoy cooking/baking, travel, learning languages, meeting new people, good wine and conversation. As your Selwyn Exchange Officer I'm looking forward to organising the Traditional Dinner Swaps between our two colleges, and also to strengthening our relationship with more cooperation, shared events, and reciprocal benefits for members at both colleges.

Sports Team

There are a lot of different opportunities to engage with sports at Oxford, however, it can sometimes be quite confusing or frustrating, especially for those who are new to the university and still trying to navigate through everything that Oxford and Keble have to offer. Part of what makes sports at Oxford and Keble so great is that there are always opportunities to play or engage, regardless of your background or experience. In fact, it is quite common for many to start a new sport or hobby while at Oxford, be it rowing, tennis, boxing, or ultimate frisbee (see *Sports and Teams at Keble* under Life at Keble for more info).

At the Freshers Fair you will be able to find lots of info about the university and Keble sports teams, as well as how to sign up! We'll also be providing some info in the WhatsApp group.



Sports Officer – Cameron Bowman
(sports@mcr.keble.ox.ac.uk)

Cameron is a second year DPhil student in History. He plays football and cricket with the college and is interested in (read: obsessed with!) a broad range of sports. Cameron wants sport to be inclusive and believes it can be an integral part of any University experience. If you have any ideas, or questions about sport at Keble, don't hesitate to get in touch!

IT and Social Networks of the MCR

As the default way for communication within the MCR, we have two different mailing lists. The first one is the “official” (keblemcr@maillist.ox.ac.uk) one and we would like to encourage you not to unsubscribe from it as important information is conveyed through this channel.

The second one is the “social” (keblemcr-social@maillist.ox.ac.uk) one that is used for sending out information about social events. By the end of September, you should receive an email informing you that you have been added to both mailing lists. If this is not the case, please do not hesitate to contact our IT officer, who will add you.



IT Officer – Laura Haas
(laura.haas@keble.ox.ac.uk)

Laura is a 4th year DPhil student in Criminology. You already met her above – she will both be IT and welfare officer this year!

Keble College Facilities

Keble Main Site

Common Room (Main Site MCR)

The main room of the Keble MCR is the reading room and has many comfy sofas and an open fireplace which is often lit in the winter. It is an excellent place to work/relax in Oxford! Other Keble MCR facilities include a TV room with a Sky TV, a kitchen with a refrigerator, microwave and dishwasher, which everyone is free to use (see 26 on map, see last page). Disabled access to the Keble MCR is via Hayward Quad.

Main Site Porters' Lodge

The college porters are some of the most helpful people in college. The Porters' Lodge, located at the entrance to the College, is mainly responsible for security and post but can provide you with most of the practical information you need. Don't be afraid to ask questions. The Lodge is open 24 hours a day and the porters are there to help and support you. Disabled access is via the entrance to staircase 1 in Liddon Quad. The front college gate is locked after dusk but members can enter using their University student card (AKA Bod card).

- All keys for the squash court, main site gym, music room, etc. can be collected here (see College Sports Facilities).
- Call in case of emergency, phone number **+44 1865 272727**

Keble Library

Accessed using your University (Bod) card, Keble library is open 24 hours a day throughout the year, something you will really appreciate when university libraries close early during the holidays. The books within the library are largely geared towards undergraduate courses, although many graduates admit to being pleasantly surprised by its resources.

Graduates can request the library to stock a book for them, if it is sufficiently relevant to their studies. Similarly, you can ask your college advisor to place a request on your behalf. The library has a printer and two computers (printer use only) in the basement. Copying and printing costs will be charged to your college account (known as battels). You can also borrow DVDs, travel guides, and novels from the library. Please email (library@keble.ox.ac.uk) for any inquiries related to the library.

As members of the University of Oxford, we are able to access all Bodleian Libraries. Other college libraries are in general inaccessible, just as Keble is to those from other colleges.

IT Support

The college IT offices are also located here and they are a good first contact to help you with any computer problems for free. You get a university email account once you have registered. This is done through the Oxford University [Computer Services](#) and you will be sent all the necessary instructions before your arrival. Since email is the default means of communication within the university, it is important to activate your account as quickly as possible.

Chapel

The Keble chapel is one of the most impressive buildings in college and is open daily to everyone of all faiths and none. Everybody is welcome to attend services in Chapel, whatever you do or don't believe. The side chapel boasts the original 'Light of the World' painting by Holman Hunt, a reproduction of which is in St. Paul's Cathedral. The main services of the week are sung by Keble Choir, one of Oxford's best-known vocal ensembles. They are College Communion on Sundays 5.30-6.30pm, Choral Evensong on Tuesdays 6.00-6.45pm, and Compline by Candlelight on Thursdays at 9pm, which is a very popular calm service of half an hour of choral music by Candlelight followed by port & hot chocolate. The College Chaplain is Fr Max Kramer (max.kramer@keble.ox.ac.uk). At the end of Michaelmas, there is a candlelit Advent carol service for Christmas which is always popular.

Dining Hall at Main Site

Keble College's dining hall is one of the largest halls among the colleges of Oxford. During term time and vacation time, the College serves three meals a day, five times a week, and two meals (brunch and dinner) over the weekends. The meals offered by the College Hall are diverse and accommodating of all dietary requirements. Mondays are meat-free as part of the College's commitment to sustainability. During term, there is a mix of informal (canteen format) and formals (3 course meal format). See *Food at College in Life at Keble*.

Keble Bar (main site)

Keble bar is a good social space in the college which provides an alternative to the MCR. With pints and even sometimes a pizza bar (usually open during weeks 1-8 of term though this will be subject to government guidance), this is a great place for a drink and a bite to eat at the end of the day. The bar is also complete with various games equipment including a Pool table and a Darts board.

HB Allen Centre Facilities

As the HB Allen Centre (HBAC) is where many MCR Members live, many (but not all) events will be held here. Those of you who do not live here will still have access to many of the facilities in HBAC and are recommended to register for a FOB (access disc or card) at the HBAC Porters' Lodge (see below) as soon as possible so they can get access from the very start of their time at Keble!

Porters' Lodge

The Porters at HBAC are a great resource for helping you settle at HBAC, even if you will not be living there. You can request your FOB from the Porters, which will give you access to MCR spaces. Packages will be delivered here and all graduate pidges (mailboxes) are located in the Acland building. If you can't locate something, the Porters are sure to point you in the right direction!

Common Room (HBAC MCR)

There is an MCR located within HBAC. Equipped with large sofas, TV with Blu-ray player, Nintendo Switch, Pool table, Table Tennis, Fussball (or Table Football), Table Hockey, Cards Table (Bridge, Mahjong, and others), and kitchenette (including a dishwasher), the HBAC MCR is a great space to meet

other graduates at Keble, hang out with friends and relax. We do, however, ask that all MCR members take responsibility to clean up after themselves and keep the MCR neat and pleasant for everyone.

QCR (Shilston room)

The Quiet Common Room (QCR) is a designated study space in HBAC. There are plenty of tables, chairs, and sofas available for studying and group work, as well as a kettle and sink for late night tea. There is also a coffee machine within the QCR generously sponsored by our alumni.

Café

The Café is located between the Porters' Lodge and the MCR. Snacks and pre-made food including pizzas, salads and sandwiches, are available here and can be purchased with your University (Bod) card. There are plenty of tables and seating for all members of college.

Laundry

HBAC has laundry facilities in the basement with four washers and dryers (although shared kitchens also have dryers). Laundry services (washing) are payable by card or Apple/Android/Google Pay and open 24 hours a day.

Gym

HBAC has its own gym, with 24 hours access. It's very well equipped! You must sign up to use it and there is a membership fee. Every individual must go through the Gym orientation before they get access. More information will follow either from the HBAC team or from members of the committee, concerning orientation, cost, and hours so keep an eye on your email!

Terraces

During Trinity Term and the Summer Period (end of April to usually around September), Clara's Terrace is available to all members of the MCR during daylight hours. The terrace is accessible via Staircase 5. The door onto the terrace will be unlocked by the Porters at the start of the day and locked at its end - the hours of opening and closing are published at the Porter's Lodge at the HBAC. Members on the terrace at closing time should respect the instructions of the porters and/or the Sub Dean.

The terrace may be used for relaxation, private or group study, and meetings with friends and colleagues. There is a second terrace, How High Terrace, which is also available to members of the MCR subject to the approval of the Dean at least seven days in advance. This terrace is reserved for organised events and such gatherings are subject to the -Dean's absolute discretion and availability. The terrace, however, needs to normally be sponsored by the MCR Committee or by a Fellow of the College.

College Sports Facilities

The College is well equipped with sports facilities, with its own sports ground on Woodstock Road, a boat house on the banks of the Isis as well as one at Godstow, and an on-site College gym. The College is situated across the road from the University Parks, which provides further facilities in close proximity to the College.

Keble College's sports ground is 10 minutes north of the main site on Woodstock Road (69 Woodstock Rd, Oxford OX2 6HL). In the summer Cricket is played and the sports ground offers two artificial cricket nets and two grass nets. Other team sports, notably rugby and hockey, are also played in the University Parks, opposite the main site.

Remember to book all pitches and courts (including matches) with the Adrian Roche, the Garden and Grounds Manager (<https://www.keble.ox.ac.uk/people/adrian-roche/>)

Squash Courts

Keble College members have access to a squash court with showers, changing rooms, and observation gallery. It is accessed via St. Cross Road, backing onto the University Club Sports Ground. A Membership Application Form, along with Terms and Conditions, can be obtained on the Keble website or from the Porter's Lodge. The membership fee is £15/year, irrespective of the time of year you choose to join and is payable by a charge to your college account (battels).

Boathouses

The College has two boat houses, one on the banks of the Isis (Thames) amongst the main college boathouses, and another on the Isis at Godstow. There are opportunities for novices to begin rowing in eights.

University Sports Facilities

Graduates can make use of the University's sport facilities, many of which are located at the Iffley Road site which is a 10-15 minute cycle from Keble, or 30 minute walk.

Life at Keble

As a graduate, life can be strung between multiple different components. This could mean much of your time at your department, libraries, pubs or even the comfort of your room. The college system in Oxford provides a unique community and space to which you can enhance your time here. At Keble, we are particularly interested in aiding not only your academic goals but also those beyond. The college and our MCR community therefore will aim to host multiple events throughout the year for social activities, hang outs and in general great ways to socialise and relax with the wider community here at Keble. As mentioned, the social calendar will be sent out soon on your arrival and you have many events during the Freshers period to look forward to starting from week -1 (2 weeks before term starts which this year is 24th of September, and term starting on 8th of October - known as week 1).

This section therefore provides some of the more staple aspects of life at college and with the MCR Community beyond the facilities and the wonderful events to look out for (which you will be notified of closer to the time).

Access to College and Facilities

Please note again, that access to the main site Keble is done via your BOD Card (Student ID card). This is used to open the main doors, bicycle gates, MCR, and Library (most of which are 24/7 during term time).

HBAC is accessed via a fob or card (which you can get via the HBAC lodge). This fob will give you access to the HBAC MCR, QCR and main doors at HBAC. The same fob will be used for those who sign up to use the HBAC gym, though this must first be confirmed with the HBAC lodge.

Remember, if you have any questions, don't hesitate to ask any of the committee or that of the relevant lodges (main site Keble Lodge and HBAC Lodge).

Receiving Mail

All full-time graduates should have 'Pidges' (mailboxes), which are located in the Sarah Acland building on the ground floor. Whether you live in HBAC or not, your campus and external post will be sent to your pidge here (situated in the Sarah Acland Building). Part-time students might not always get a pidge for post, however, post can be delivered to the HBAC address and collected at the lodge. Executive Degrees such as EMBA's and MMPM's can receive post through the HBAC porters lodge.

- For large packages and mail delivered to the HBAC porters, pick up times are set between
 - Monday to Friday Saturday and Sunday
 - 7.30am – 8.30am 7.30am – 8.30am
 - 1.30pm – 2.30pm 1.30pm – 2.30pm
 - 5.00pm – 8.00pm 5.00pm – 7.00pm

- Mail for those who do not have pidges can be collected at more extended times.

If there is any issue, please ask the HBAC lodge, who are always happy to help.

Keble College has now signed up with Pedal and Post for ‘final mile’ parcel delivery. To reduce the environmental impact of your orders, please provide the following address:

[Your Name]
Keble College (Parks Road / HBAC)
Pedal and Post
Binsey Lane
Oxford, OX2 0EX

More information can be found here: <http://www.pedalandpost.co.uk/university-freight-consolidation-pilot/>

Food at College

Currently, members are required to book Monday-Friday lunch/dinner meals by 10:30 morning, and meals for Saturday-Sunday need to be booked by 11:30 of the preceding Friday. Breakfast and brunch currently do not require booking. Booking of meals is done through the [College portal \(https://meals.keble.ox.ac.uk/oxbooking/\)](https://meals.keble.ox.ac.uk/oxbooking/) and is charged to your student account (battels), which can be viewed through the same portal under Fees & Charges. The price of hall meals varies, though for 2023-2024, vegetarian lunches and dinners were approximately £5.00, whilst meat was £6.00. However, these prices may be subject to change. Formals and Black-Tie Dinners will cost more and are typically sit-down three course dinners. You can invite a set number of guests (usually between 1 and 2) for formals. However, there are additional charges for guests.

All hall menus are sent out by the Keble Dining team every week (hall.supervisor@keble.ox.ac.uk). Dining times for 2022-2023 were typically:

Meal-Times during term (Week 1- 8)

Meal Type	Days	Time	Description
Breakfast	Monday – Friday	0800-0930	Cafeteria style
Brunch	Saturday – Sunday	1030-1200	Cafeteria style
Lunch	Monday – Friday	1230-1345	Cafeteria style
Informal Hall	Monday, Wednesday, Thursday and Saturday	1800-1930	Cafeteria style

Formal Hall	Tuesday, Friday and Sunday	Be in hall by 1900	Three course meal, wear gowns. Booking is required and closes on the day in the morning (usually before 10:30am, Friday morning for Sunday Formal).
--------------------	----------------------------	--------------------	---

*these are currently provisional times, updates will be provided throughout the term from the hall supervisor.

Out-of-term timetables are subject to college timetables. Formals do not run outside of term time and lunch, brunch and informal hall require pre booking via the portal. Breakfast (during the week) does not require pre-booking in vacation times.

HBAC Café and Keble Bar

The Café is located between the Porters’ Lodge and the MCR and the Keble Bar is within the main site. Using your Bod Card or bank card, snacks and pre-made food including pizzas, salads and sandwiches, are available here. There are plenty of tables and seating for MCR use in both facilities.

Bike Locking and Doctor

Both Keble Main Site and HBAC offer a space to lock your bike throughout your time at Keble College. A registration and corresponding sticker will need to be attached to your bike, otherwise staff will remove your bike. You can go to both corresponding porter lodges to get a relevant sticker for parking your bike at Keble Main Site and HBAC. Note that the spaces to lock your bikes in HBAC are accessible by the public, so make sure you also get a strong lock (see Bicycles under Living in Oxford - General).

Every term, there will also be a Bike Doctor available at HBAC in Mickie Lane (beside the bike racks in HBAC). The bike doctor will be here once to twice each term and it is free to get your bike checked up. If any repairs are needed, you will be charged for any replacement parts.

Sports and Teams at Keble

At Oxford, you can play sport at University (‘Blues’) or college level. While the Blues teams tend to be a bit more serious, taking part in college sports or university clubs can be a great way to meet new people, stay active, benefit your physical and mental health, fuel (or temper) your competitive edge, and help build discipline and mental strength. All teams at Keble and beyond also have a great social scene and people often form strong bonds with their respective teammates! In Keble, there are various MCR specific teams including football and cricket. When there is low demand for a particular sport, members of the MCR can join the JCR sports clubs and teams. When combined with the JCR you can get involved with anything from Rowing and Hockey to Dancesport and Croquet. That doesn’t mean there aren’t other new sports on offer if you fancy them: Keble MCR members have joined university teams such as Lacrosse, Quidditch, and Australian Rules Football so there should definitely be something on offer for you! Similarly, if there is something you would like to start or feel there is enough demand for in the MCR, e.g., the Keble MCR Polo team that was started last year, then please get in touch with the Sports Officer, who can help you get started. For more information about what is available in Keble and Oxford, have a look at the Sports page on the MCR website or get in touch with the Sports Officer.

Rowing

If you want to get involved in an iconic Oxford sport, it is hard to go past rowing. The Keble College Boat Club is one of the best college rowing teams, and welcomes anyone from complete novices to powerhouse athletes! Each term has one major regatta, with the Christ Church regatta in Michaelmas term (for novices only), Torpids in Hilary term, and Summer Eights in Trinity Term. Even if you choose not to get involved in rowing, the regattas have a great atmosphere, so we encourage everyone to come down and cheer on Keble. If you are keen to row, keep your eyes on the [Facebook](#) and [WhatsApp groups](#) at the start of Michaelmas term, or contact the Open Novice Captain Jamie (jamie.todd@keble.ox.ac.uk) or Women's Novice Captain Rowena (rowena.field@keble.ox.ac.uk).

Punting

Punting, one of the iconic activities of Oxford, is also offered for social use through the College; Keble MCR has a punt rented at the Cherwell Boathouse that can be booked during the Trinity Term and Summer. Keble MCR students will only have to pay a fraction of the fee for the use of multiple hours. Details regarding the punt and how to book it will be sent out closer to the time (most likely Easter 2024).

Croquet

The MCR has a croquet set it shares with the JCR that can be borrowed! Ask an MCR member for the details!

College Doctor

When you come to Keble, you must register with an Oxford doctor. Keble prefers that you register with the Jericho Health Centre on Walton Street (less than half a mile away). Information about how to do this will be provided by the college before you arrive. If you need to see a doctor, you can always call and make an appointment (01865 429993). UK residents, and some overseas students are entitled to free health care under the National Health Service, so be sure to find out if you are covered. You can also ask the nurse for recommendations of dentists and other specialists.

There is also a College nurse (pml.keblenurse@nhs.net), available every weekday during term time (weeks 1 to 8) for physical and mental health issues. The nurse has her office in Somerville College, a two-minute walk from Keble, as we share a nurse between our neighbouring colleges Somerville College and Green Templeton College.

The college nurse can see you for minor illness, minor injury, mental health, contraception and sexual health issues as well as providing support and advice for you to manage any ongoing health conditions that you may have.

Times and locations are accessible via (<https://www.keble.ox.ac.uk/current-students/student-wellbeing-welfare/medical/>)

The nurse can also provide some advice via email or telephone. Appointments may be booked by emailing the college nurse.

The nurse is usually based in Darbishire 16, Somerville college (ask the Somerville Porter) and their relevant telephone number is 01865 270608. Alternatively:

- College Doctors for Somerville and Keble at the Observatory Medical Practice tel: 01865 429993
- Call 111 for 24 hour medical assistance or www.111
- Only call 999 in a medical emergency

Small Grants and Scholarships

<https://www.keble.ox.ac.uk/admissions/graduates/scholarships/>

Financial Information for Keble College

Soon after your arrival, you should visit the Bursary to check that your Battels (Student) Account is in order. You will be required to pay a £150 damage deposit, whether or not you live in college accommodation and key deposits (£15) for your room key if living in College. If there is a delay in setting up your bank account or some other kind of problem with your finances, you should inform the Bursary immediately, as the staff can usually make arrangements. More accurate and relevant information can be found [here](#).

At the end of each term, you will have to pay your battels (you will receive an email) but you can do it before if you prefer. You can see all your charges and pay your battels [here](#).

Living in Oxford - General

IT

Remember to set up your Eduroam (which is remote access not SSO) (to which you can change the password and gain subscriptions to other programmes <https://register.it.ox.ac.uk/self/index>).

Remember to also check your details to the university, records, and fill in your termly Graduation Self Reporting (GSR) at Student Records (<https://www.ox.ac.uk/students/selfservice/>).

If you have any college related issues, or personal IT issues, remember you can visit the college IT staff (situated in the old site under the warden's lodgings).

Accommodation

College Accommodation

The 'recently' built H B Allen Centre brings 2/3rds of Keble's graduate students onto one site offering top-quality accommodation and fantastic supporting facilities. It has 231 en-suite rooms for postgraduate students. Of these, 191 are arranged in 32 self-contained flats, each with a spacious communal kitchen/dining room. The remaining 40 are individual rooms with their own kitchenette. For further information, see the Keble [dedicated website](#).

Notably, if you do NOT live in HBAC, you can – and indeed, are encouraged to – visit the building and use the spaces there, such as the MCR and QCR, the café and the gym!

University Accommodation

As a University member, you may also be able to get accommodation owned and managed centrally by the university. For that, you must apply to the [University Accommodation Office](#). This is typically not in association with Keble College and is separate to college accommodation.

Private Accommodation

Private accommodation varies widely in cost, quality, and convenience. If you are living out of the College, it is worth coming to Oxford as early as possible to find a place to live. Accommodation in Oxford is expensive (average about £170-£200 a week for students) and finding a place near your College or department can be difficult. The University Accommodation Office is the best resource and has a database of what is available. Another useful source of information is the [Daily Info](#) website. The most practical way to find accommodation is through the [OxGradHousing](#) Facebook group. Research students and those on two-year courses may need to secure this kind of housing in their second and subsequent years. There is also a comprehensive guide available from OUSU that will be distributed around the time of the room ballot.

Weather

In the summer months (May - August), Oxford can be hot and sunny and in the winter (October - February) it can be cold and snowy (snowing heavily every few years, with 2021 January bringing a day of heavy snow followed by some flurries), and it will also rain at any time of the year (October 2020 being one of the heaviest on record!). So, while you are also packing thick jumpers for the coming term you may exchange these for cotton shirts and swimming costumes come Trinity term. It is also worth noting that whilst the H B Allen Centre provides radiators in each room and can provide fans upon request in the summer months, dressing appropriately is the best.

For the first term (Michaelmas - MT) warm layers, a reliable, waterproof jacket are essential. Second term (Hilary - HT) may still be chilly, especially for those from warmer climates though there are sporadic days reaching 20° C. The third, and final, term (Trinity - TT) is often warmer - especially when relative heat waves pass through Oxford and the UK. Temperatures have been known to reach 30° C in such conditions, though some buildings in Oxford can feel warmer.

Dress

Dress around the University is informal. There are several occasions such as guest dinners, subject and club dinners, and balls where the dress code can be black tie (tuxedo / formal cocktail dress); attendance at these events is however completely optional and specific dress is not tightly enforced. At Keble we have a moderate and open mind to traditions, so do feel free to join in, though also do not feel stringent. If however you want to go all out, tuxedos and dresses can usually be hired, though second hand/cheaper ones can be bought in town. Though, as mentioned often there are not stringent requirements for dress codes. The exception is events that require sub fusc (matriculation and graduation). Other useful items of clothing are a smart jacket and tie and a full-length dress, according to your preference.

Specific attire is also required for formal university occasions such as matriculation and examinations (see '[sub fusc](#)' in the glossary), which typically comprises of a gown, white blouse/button-up/shirt, black

trousers/skirt, black shoes, dark socks/black stockings, white bow tie/black ribbon and a mortar board/soft cap. Such garments can usually be obtained in Oxford, though most students opt to only purchase the gown, mortar board/cap, and bow tie/ribbon at the [store](#).

Bicycles

The bicycle is synonymous with Oxford. Cycling is a very popular means of transport in Oxford as it is a fast and affordable way to get around town. While it is more affordable to bring your own bicycle from home, this isn't always an option and there are a number of bike shops around the city. Unfortunately, where there are bicycles there is bicycle theft and it is advised that you spend a little money on a D-lock and always lock your bike to a solid object such as a rack.

There is a large second-hand bike turnover in Oxford. The Facebook group '[Buy and Sell Cycling Stuff in Oxfordshire](#)', is a good place to look for a bike if you want to buy one second hand. Or you can always check the Facebook Marketplace and Gumtree for available bikes. There are bicycle racks around the perimeter of the College and plenty of bike racks at Keble Main Site and HBAC. These racks are particularly secure as it is only accessible to members of Keble, and the area is monitored by CCTV. If you wish to use these facilities, please register your bike with the Porters' Lodge (main site and in HBAC) when you arrive. A helmet is also strongly recommended, and it is a legal requirement to use bike lights (white at the front and red at the back) after dark. You can be stopped and fined for not using them. Removable bike lights (to prevent theft), locks, and other things can be purchased from the [university security services](#) at a reduced rate.

Cars

Parts of the city centre are only accessible to pedestrians and public transport, and parking space is limited. There are short-stay parking spaces close to college and HBAC. There are also spaces at Norham Gardens which is a five-minute walk. To use these parking spaces, you need to purchase a parking ticket, which tends to be quite expensive. If you are living in private accommodation, you may be entitled to a resident's parking permit, and you should speak to your landlord. Students are not able to park cars within College grounds. HBAC has temporary parking spaces which can be booked by emailing the Lodge for 2 hour periods - used primarily in aiding with moving in and out of accommodation.

Buses and Walking

For those who wish to avoid having a car or bicycle in Oxford, it is quite possible to walk to most locations. Most destinations are within 5 to 20 minutes walking from Keble, although distant locations such as the JR Hospital, Churchill Hospital, and Headington are easily accessible by the comprehensive city bus system (or by bicycle).

Passport photographs

You will probably find it useful to bring copies of recent passport-sized photographs. Membership and discount cards often require a photo of this kind. An instant-photo machine is also available in Boots, the pharmacy on Cornmarket street.

Electricity

British electricity is 240/220 volts and 50 Hz and runs through the large three-pin outlets (rectangular shaped pins).

Visas, Customs, and Immigration

If coming from abroad, ensure that you have the appropriate entry documents on hand before leaving home. Depending on your country of origin, this may include your letter of admission to the college or your department in addition to your Tier 4 visa. Before travelling to the UK, check the UK Border Agency website and/or your local UK Embassy for more information. Remember (at least for your UKBA Landing Card) that your address in College/HB Allen Centre is: Keble College, Parks Road, Oxford, Oxfordshire, OX1 3PG or HB Allen Centre, 25 Banbury Road, Oxford OX2 6NN. It is advisable when clearing border control to carry all the documentation used when applying for the student visa, particularly CAS documentation. If in doubt, also get in contact with your department about this, they are the ones who normally deal with visa issues.

Financial - bank accounts

All the main banks in Oxford (Barclays, HSBC, Lloyds and Santander) are located on Cornmarket Street and generally offer accounts for students. If you are a non-EU student on a one-year course, you may not be eligible for a student account, but it is worth researching the banks in advance to check. If you are an international student, be prepared to provide evidence of your address in the UK and your student visa in order to set up a bank account (the best combination of documents to take are your passport, college enrolment certificate, and lease agreement).

Keble also has a number of travel and study awards available to students. The Keble Association is a registered charity that regularly supports students and can award grants to help with study and travel costs. The Faith Ivens-Franklin Travel Fund is for current graduates to help with any travel in connection to your academic work and the Graduate Study Support Fund awards grants for everything from course-related equipment to conference attendance. More information can be found at:

<http://keble.ox.ac.uk/student/student-support/graduate-specific-information/travel-awards>.

There are also various funds that you can apply for if you find yourself facing financial hardship and more information can be accessed at:

<http://keble.ox.ac.uk/students/student-support/financial-and-personal-support/financial-assistance>.

Phone Contract / Number

Even if you do not think you need one, you will have to get a UK phone number. It's essential for registering and communicating with a GP, or even smaller things like ordering food. You can get a Sim-card basically everywhere, such as Tesco or Sainsbury's.

Working in the UK

Depending on your Visa and Course Classification (e.g. DPhil) you may be able to work for a limited number of hours a week. If you are planning on doing this, remember you will need a National Insurance Number in order to work in the UK, and it is a fairly lengthy process in terms of wait time so it is best to apply as soon as you can. You can work without one while the process is underway (as long as you are eligible to work according to your visa), and should provide your employer with it as soon as you have it. If you have pre-settled or settled status, you may prove your right to work via a shared code (see link below).

Shared Code: <https://www.gov.uk/prove-right-to-work/get-a-share-code-online>

See: <https://www.gov.uk/apply-national-insurance-number>

Shopping

There will be time in the first few days to shop for essentials, such as gowns, mortar boards, books, bicycles etc. There will usually be a bike sale at the Oxford Union (St Michael's Street) at the end of 0th Week. Alternatively, you can buy a bike from bike shops (Cowley Road or Walton Street). Argos online, Tesco, Sainsbury's, and John Lewis in the Westgate Mall are good places to purchase kettles, cooking utensils, linen and other essentials for your room. The Facebook group Oxford swap shop is a platform for students to cheaply buy and sell all sorts of things and it is worth becoming a member if interested. Gowns can be bought in the University Campus Stores and similar shops on Broad Street and High Street. All major shops in Oxford are based around Cornmarket, Queens (including the Westgate Mall) and the High Street.

Sexual Health

Through the college you will have access to welfare officers (both students and staff) who are available for information and support. Do speak to the welfare team if you need any information. Nevertheless, due to the NHS, most contraceptive prescriptions are free. Pregnancy termination is legal and free in England.

- The Oxfordshire Sexual Health Clinic at the Churchill Hospital provides a broad range of services including contraceptives, HIV, STD and pregnancy testing. These can be mailed to you and have free express shipping. 01865 231231 (<https://www.sexualhealthoxfordshire.nhs.uk/>)
- Terrence Higgins Trust provides HIV-related info and support. 08451 221200 (<https://www.tht.org.uk/>)
- You can self-refer to an abortion provider for any reason, for example the British Pregnancy Advisory Service. (<https://www.bpas.org/>)

Travelling to Oxford

The below information is under normal circumstances; please check government information and relevant plane, train, bus or traffic and travel websites before making any travel plans:

From London

- One hour by train from Paddington Station in London. A longer (over an hour), but cheaper train can be found leaving from Marylebone Station in London. Booking in advance with the [National Rail](#) or [Trainline](#) is the cheapest option (both of these have Android/Apple applications that can be downloaded to virtually secure your ticket).
- Around two hours by bus from Victoria. The options are ‘[Oxford Bus Company](#)’ (X90) or ‘[Oxford Tube](#).’

From Airports

- From Birmingham Airport (BHX), the train is the easiest option and it only takes one hour.
- From Heathrow Airport (LHR) and Gatwick Airport (LGW): The bus service - Oxford Bus Company’s ‘[The Airline](#)’ is one of the easiest ways to navigate to Oxford. Travel from Heathrow takes 90 minutes and costs £23 (single) and from Gatwick takes 2.5 hours and costs £28 (single). Different types of return tickets can be bought, depending on when you will be returning to the airport.
- National Express coach service offers regular services from all of the major airports: Heathrow, Gatwick, Luton and Stansted.

By Bus

- Gloucester Green Bus Station is the closest stop for those heading to Keble or the HB Allen Centre. Anyone arriving on a bus/coach from the North (i.e. Banbury/Woodstock) get off at the ‘Keble Road’ stop or the stop opposite the old Radcliffe Infirmary. Keble and the HB Allen Centre are both about a safe 15 minute walk from Gloucester Green bus station or 20 minutes from the train station. A taxi from the bus station or train station to Keble should cost around £5 - £10. (001 Taxi’s phone number: 01865 240000).

By Train

- Rail and bus passes can be useful if you plan to travel in the UK while at Oxford. A Young Person’s [Railcard](#) is available at the rail station for those 25 and under or full time mature students for about £30 and will entitle you to one third reduction with off-peak rates. You can buy a one-year [National Express](#) Coachcard for £10, which gives you discounts of up to 30% on National Express fares throughout Great Britain. Two passport-sized photos are typically required though much of this can also be achieved online. Uploading a passable passport photo and processing payment allows a virtual Railcard to immediately be accessed through the mobile app. Further, bus passes are also available from the Oxford Tube, Oxford Bus Company, Stagecoach and Oxford Citylink companies.

By Car

- If you arrive by car, a limited number of short-stay parking places are available outside the college on Keble Road for you to unload your car. Arrangements can be made with the Porters of the H B Allen Centre should you need to unload your belongings.

Associate members

Some individuals who are not current graduate students at Keble but who are connected with college are able to become associate members of the MCR for a small fee (£50/year or £20/term). They are able to enjoy many aspects of the MCR; they are added to the mailing list, can play in the sports teams, are able to attend all events and are eligible to run for non-executive committee positions. Additionally, they have access to both the main site and HBAC MCR. Access to the first is obtained through your BOD card; a FOB can be obtained from the HBAC porters for the second. To become an associate member, individuals must either be a previous MCR member or the partner of a current MCR member. Please see the application form on the MCR website or contact the secretary for more details. This is a particularly good opportunity if you have a long-term partner or spouse coming to Oxford with you (sometimes it can be more difficult for them to integrate into a social scene). The associate membership gives them an excellent opportunity to quickly integrate into a common social scene.

Form(https://mcr.keble.ox.ac.uk/wp-content/uploads/2022/07/AssociateMembershipForm_19-corrected.doc)

Rules (https://mcr.keble.ox.ac.uk/wp-content/uploads/2020/09/RulesForAssociateMembership_2018.pdf)

Leaving the MCR

Throughout your time here, former students will be supporting you and all current students through the Talbot Fund. Keble alumni fund student scholarships, bursaries, prizes, our outreach programme, extra-curricular activities (sport, music and drama) and help to restore and refurbish the wonderful buildings in which we live and work. In 2016, the MCR voted for all its members to start their own tradition of alumni support for the next generation by opting in to making a donation of £20 to the Talbot Fund as they leave. By way of thanks, MCR Leavers who make such a gift will receive a Keble ‘brick’ and become honorary members of the Talbot Society. Members will be notified about the MCR Leavers Gift before they leave and receive details of how to allocate your gift to an area of choice and how to opt-out should you wish. For further information please contact the Alumni & Development Office.

Key Contacts at Keble College

Welfare

<i>Position</i>	<i>Name</i>	Contact email
Welfare Fellow & Chaplain	Fr Max Kramer	chaplain@keble.ox.ac.uk
Student Support Officer	Layla Al-Katib	student.support@keble.ox.ac.uk
College Nurse	Jenny Fitzgerald	pml.keblenurse@nhs.uk
On-site Counsellor	Kirsty Hunter	counsellor@keble.ox.ac.uk
Harassment Officers	Dr Ellen Paterson	ellen.paterson@keble.ox.ac.uk
	Dr Tom Maltas	tom.maltas@keble.ox.ac.uk
Junior Deans (for emergency issues out of office hours)	Zachary Oliver	Contact by calling the Porters' Lodge on 01865 272727
	Bhadrajee Hewage	
	Jules Pars	
	Ava Harrison	
Senior Tutor (for academic issues)	Dr Ali Rogers	senior.tutor@keble.ox.ac.uk

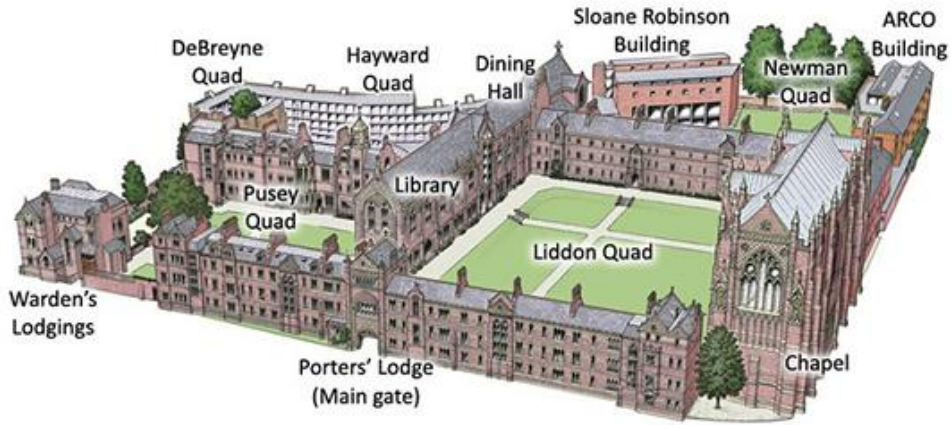
Administrative

Position	Name	Contact
Academic Director (HBAC)	Ian Archer	ian.archer@keble.ox.ac.uk
Financial Controller	Michael Hill	michael.hill@keble.ox.ac.uk
Accounts Assistant	Hien Le	hien.le@keble.ox.ac.uk

College Office	Penn Bateman	college.office@keble.ox.ac.uk
	Vicky Archibald (admissions)	
IT Office	Steve Kersley	it-support@keble.ox.ac.uk
	Jacob de Goris Jedrzejowski	
Housekeeping	Mirjana Haouam	mirjana.haouam@keble.ox.ac.uk
Porters Lodge (HBAC)	various	hbac.porters@keble.ox.ac.uk
Porters Lodge (Main Site)	various	porter.lodge@keble.ox.ac.uk
Maintenance	Log via online form	Online form

Maps

Keble College - Main Site



Quads

- 1 De Breyne
- 2 Hayward
- 3 Liddon
- 4 Newman
- 5 Pusey

Entrances

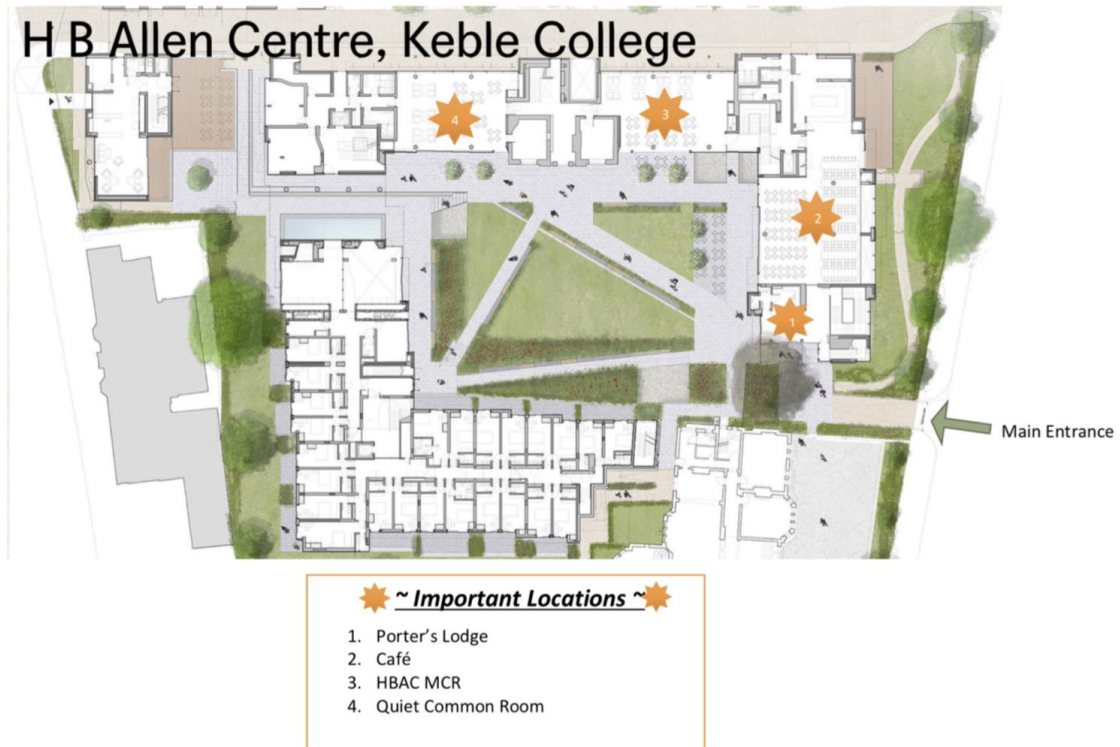
- 6 Arco Gate
- 7 Chapel-side Gate
- 8 Lodge Entrance
- 9 Magic Gate
- 10 Maintenance Only Gate
- 11 Sloane Robinson Gate
- 12 Vehicle Access Gate

Buildings/ Places

- 13 Arco
- 14 Bar
- 15 Bike Racks
- 16 Chapel
- 17 De Breyne
- 18 Gibbs Room & IT
- 19 Hall
- 20 Hayward
- 21 JCR (Gym below)
- 22 Sloane Robinson
- 23 Library
- 24 Liddon (West, Lodge & Chapel)
- 25 Maintenance
- 26 MCR
- 27 Offices
- 28 Porters' Lodge
- 29 SCR
- 30 Toilets
- 31 Warden's Lodgings
- 32 Washing Machine Room



Keble College - H B Allen Centre (HBAC)



Oxford

Please refer to this Oxford Freshers Map, made by the JCR:

Keble Freshers' Map -

<https://www.google.com/maps/d/viewer?mid=11bYT6XIIYokDKt5RQhwwnR6B-sg&usp=sharing>

Bodleian Libraries

Please refer to:

https://www.bodleian.ox.ac.uk/sites/default/files/bodreader/documents/media/map_of_libraries_2021_09_21.pdf

As members of the University of Oxford, we are able to access all Bodleian Libraries. Other college libraries are in general inaccessible, just as Keble is to those from other colleges.